

Anti-CAPS1 CADPS Antibody

Catalog Number: A05771

About CADPS

CAPS1 and its related protein CAPS2 encode novel neural/endocrine-specific cytosolic and peripheral membrane proteins. Both are essential components of the synaptic vesicle priming machinery and are required for the Ca²⁺-regulated exocytosis of secretory vesicles; CAPS-deficient neurons contain no or very few fusion competent synaptic vesicles, causing a selective impairment of fast phasic transmitter release. CAPS1 acts at a stage in exocytosis that follows ATP-dependent priming, which involves the essential synthesis of phosphatidylinositol 4, 5-bisphosphate and is thought to be a specific regulator of large dense-core vesicle fusion.

Overview

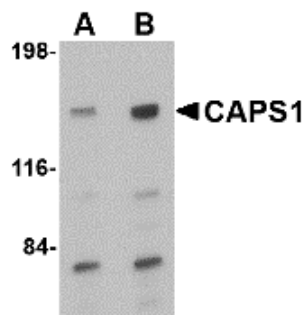
Product Name	Anti-CAPS1 CADPS Antibody
Reactive Species	Human, Mouse, Rat
Description	Boster Bio Anti-CAPS1 CADPS Antibody (Catalog # A05771). Tested in ELISA, WB, IHC-P, IF applications. This antibody reacts with Human, Mouse, Rat.
Application	ELISA, IF, IHC-P, WB
Clonality	Polyclonal
Formulation	CAPS1 Antibody is supplied in PBS containing 0.02% sodium azide.
Storage Instructions	CAPS1 antibody can be stored at 4°C for three months and -20°C, stable for up to one year. Avoid repeated freeze-thaw cycles. Antibodies should not be exposed to prolonged high temperatures.
Host	Rabbit
Uniprot ID	Q9ULU8

Technical Details

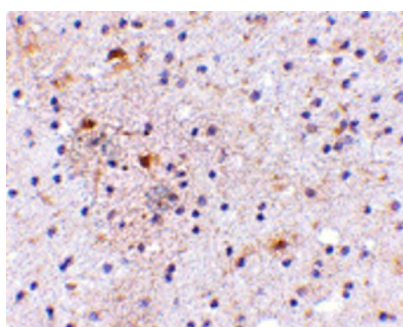
Immunogen	CAPS1 antibody was raised against a 20 amino acid synthetic peptide near the carboxy terminus of the human CAPS1. The immunogen is located within the last 50 amino acids of CAPS1.
Predicted Reactive Species	Bovine
Cross Reactivity	Numerous isoforms of CAPS1 are known to exist; the lower molecular weight bands seen in the immunoblot image are likely to be these isoforms. This CAPS1 antibody is predicted to be specific to CAPS1 and not recognize CAPS2.
Isotype	IgG
Form	Liquid
Concentration	1 mg/mL

Purification	CAPS1 Antibody is affinity chromatography purified via peptide column.
Suggested Dilutions	<p>CAPS1 antibody can be used for detection of CAPS1 by Western blot at 0.5 - 1 ug/mL. Antibody can also be used for immunohistochemistry starting at 5 ug/mL. For immunofluorescence start at 20 ug/mL.</p> <p>Antibody validated: Western Blot in rat samples; Immunohistochemistry in human samples and Immunofluorescence in human samples. All other applications and species not yet tested. Optimal dilutions for each application should be determined by the researcher.</p>

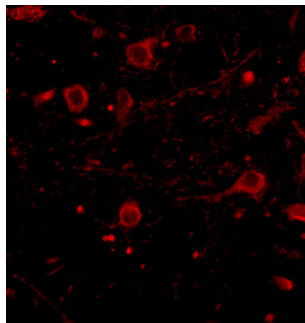
Anti-CAPS1 CADPS Antibody (A05771) Images



Western blot analysis of CAPS1 in rat brain tissue lysate with CAPS1 antibody at (A) 0.5 and (B) 1 ug/mL.



Immunohistochemistry of CAPS1 in human brain with CAPS1 antibody at 5 ug/mL.



Immunofluorescence of CAPS1 in human brain tissue with CAPS1 antibody at 20 ug/mL.

Submit a product review to [Biocompare.com](https://www.biocompare.com)

Submit a review of this product to [Biocompare.com](https://www.biocompare.com) to receive a \$20 Amazon.com giftcard! Your reviews help your fellow scientists make the right decisions. Thank you for your contribution.



Anti-CAPS1 CADPS Antibody

For Research Use Only. Not for use in diagnostic procedures.