

## Anti-EB3 MAPRE3 Antibody

Catalog Number: A05782-1

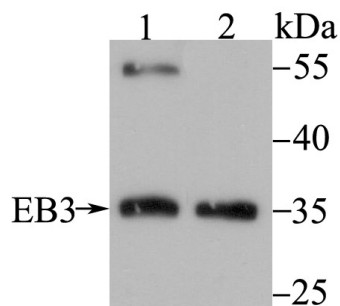
### Overview

Product Name	Anti-EB3 MAPRE3 Antibody
Reactive Species	Human, Mouse, Rat
Description	Boster Bio Anti-EB3 MAPRE3 Antibody catalog # A05782-1. Tested in WB,ICC,IF,IHC,Flow Cytometry applications. This antibody reacts with Human,Mouse,Rat.
Application	Flow Cytometry, IF, IHC, ICC, WB
Clonality	Polyclonal
Formulation	Rabbit IgG, 1mg/ml in PBS with 0.02% sodium azide, 50% glycerol, pH7.2
Storage Instructions	Store at -20°C for one year. For short term storage and frequent use, store at 4°C for up to one month. Avoid repeated freeze-thaw cycles.
Host	Rabbit
Uniprot ID	Q9UPY8

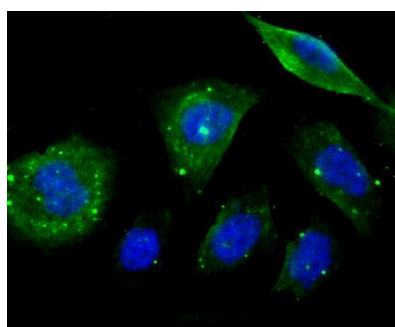
### Technical Details

Immunogen	Recombinant protein
Isotype	IgG
Form	Liquid
Concentration	1 mg/ml
Purification	ProA affinity purified
Suggested Dilutions	WB: 1:500-1:1,000 ICC: 1:50-1:200 IHC: 1:50-1:200 FC: 1:50-1:100

## Anti-EB3 MAPRE3 Antibody (A05782-1) Images



Western blot analysis of EB3 on different lysates using anti-EB3 antibody at 1/500 dilution. Positive control: Lane 1: Mouse brain tissue Lane 2: K562



ICC staining EB3 in PC-3M cells (green). The nuclear counter stain is DAPI (blue). Cells were fixed in paraformaldehyde, permeabilised with 0.25% Triton X100/PBS.

### Submit a product review to [Biocompare.com](https://www.biocompare.com)

Submit a review of this product to [Biocompare.com](https://www.biocompare.com) to receive a \$20 Amazon.com giftcard! Your reviews help your fellow scientists make the right decisions. Thank you for your contribution.



Anti-EB3 MAPRE3 Antibody

For Research Use Only. Not for use in diagnostic procedures.