

Anti-Protein atonal homolog 7 ATOH7 Antibody

Catalog Number: A05797

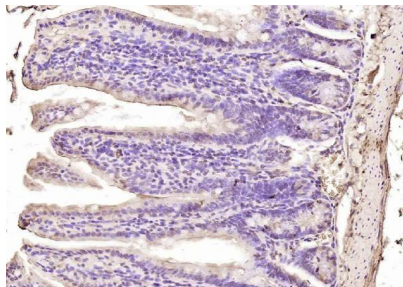
Overview

Product Name	Anti-Protein atonal homolog 7 ATOH7 Antibody
Reactive Species	Human
Description	Boster Bio Anti-Protein atonal homolog 7 ATOH7 Antibody catalog # A05797. Tested in WB,ICC/IF applications. This antibody reacts with Human.
Application	IF, ICC, WB
Clonality	Polyclonal
Formulation	Rabbit IgG, 1mg/ml in PBS with 0.02% sodium azide, 50% glycerol, pH7.2
Storage Instructions	Store at -20°C for one year. For short term storage and frequent use, store at 4°C for up to one month. Avoid repeated freeze-thaw cycles.
Host	Rabbit
Uniprot ID	Q8N100

Technical Details

Immunogen	KLH conjugated synthetic peptide derived from human MAT2A: 31-120/152.
Isotype	IgG
Form	Liquid
Concentration	1 mg/ml
Purification	The antibody was affinity-purified from rabbit antiserum by affinity-chromatography using epitope-specific immunogen and the purity is > 95% (by SDS-PAGE).
Suggested Dilutions	WB: 1:500-1:2000 ICC/IF: 1:50-1:100

Anti-Protein atonal homolog 7 ATOH7 Antibody (A05797) Images



Paraformaldehyde-fixed, paraffin embedded (mouse intestine); Antigen retrieval by boiling in sodium citrate buffer (pH6.0) for 15min; Block endogenous peroxidase by 3% hydrogen peroxide for 20 minutes; Blocking buffer (normal goat serum) at 37°C for 30min; Antibody incubation with (MATH5) Polyclonal Antibody, Unconjugated at 1:200 overnight at 4°C.

Submit a product review to Biocompare.com

Submit a review of this product to Biocompare.com to receive a \$20 Amazon.com giftcard! Your reviews help your fellow scientists make the right decisions. Thank you for your contribution.



Anti-Protein atonal homolog 7 ATOH7 Antibody

For Research Use Only. Not for use in diagnostic procedures.