

Anti-SLAMF3 LY9 Antibody

Catalog Number: A05830-2

About LY9

The signaling lymphocyte-activation molecule family member 3 (SLAMF3), also known as LY9, is a cell surface receptor that is expressed on T and B lymphocytes and belongs to the CD150/SLAMF1 receptor family. SLAMF3 was identified through a yeast two-hybrid screening in which SLAMF3 bound to the X-linked lymphoproliferative disease gene product SAP, suggesting that in activated T cells, SLAMF3 signaling can be triggered SAP. Its expression on the cell surface appears to be regulated via its interaction with the clathrin-associated adaptor complex 2 (AP-2). Despite its similarity to SLAMF1 in structure and interactions with SAP, SLAMF3-deficient mice do not exhibit phenotypic characteristics associated with SLAMF1- and SAP-deficient mice, suggesting that SLAMF3 plays other roles in T cell activation.

Overview

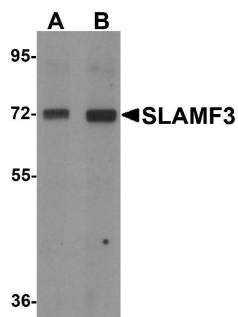
Product Name	Anti-SLAMF3 LY9 Antibody
Reactive Species	Human, Mouse, Rat
Description	Boster Bio Anti-SLAMF3 LY9 Antibody (Catalog # A05830-2). Tested in ELISA, WB, ICC, IF applications. This antibody reacts with Human, Mouse, Rat.
Application	ELISA, IF, ICC, WB
Clonality	Polyclonal
Formulation	SLAMF3 Antibody is supplied in PBS containing 0.02% sodium azide.
Storage Instructions	SLAMF3 antibody can be stored at 4°C for three months and -20°C, stable for up to one year. Avoid repeated freeze-thaw cycles. Antibodies should not be exposed to prolonged high temperatures.
Host	Rabbit
Uniprot ID	Q9HBG7

Technical Details

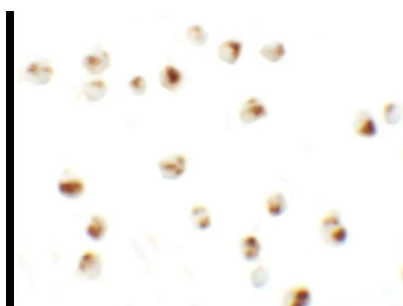
Immunogen	SLAMF3 antibody was raised against an 18 amino acid synthetic peptide near the carboxy terminus of human SLAMF3. The immunogen is located within amino acids 520 - 570 of SLAMF3.
Predicted Reactive Species	Mouse
Cross Reactivity	At least three isoforms of SLAMF3 are known to exist. SLAMF3 antibody is predicted to not cross-react with other SLAM protein family members.
Isotype	IgG
Form	Liquid
Concentration	1 mg/mL

Purification	SLAMF3 Antibody is affinity chromatography purified via peptide column.
Suggested Dilutions	SLAMF3 antibody can be used for detection of SLAMF3 by Western blot at 1 - 2 ug/mL. Antibody can also be used for immunocytochemistry starting at 10 ug/mL. For immunofluorescence start at 20 ug/mL. Antibody validated: Western Blot in human samples; Immunocytochemistry in human samples and Immunofluorescence in human samples. All other applications and species not yet tested. Optimal dilutions for each application should be determined by the researcher.

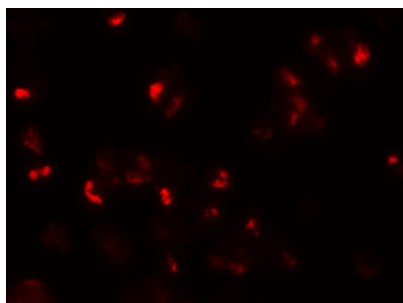
Anti-SLAMF3 LY9 Antibody (A05830-2) Images



Western blot analysis of SLAMF3 in 293 cell lysate with SLAMF3 antibody at (A) 1 and (B) 2 ug/mL.



Immunocytochemistry of SLAMF3 in 293 cells with SLAMF3 antibody at 10 ug/mL.



Immunofluorescence of SLAMF3 in 293 cells with SLAMF3 antibody at 20 ug/mL.

Submit a product review to [Biocompare.com](https://www.biocompare.com)

Submit a review of this product to [Biocompare.com](https://www.biocompare.com) to receive a \$20 Amazon.com giftcard! Your reviews help your fellow scientists make the right decisions. Thank you for your contribution.



Anti-SLAMF3 LY9 Antibody

For Research Use Only. Not for use in diagnostic procedures.