

Anti-RPS17 Antibody Picoband®

Catalog Number: A05831-1

About RPS17

40S ribosomal protein S17 is a protein that in humans is encoded by the RPS17 gene. Ribosomes, the organelles that catalyze protein synthesis, consist of a small 40S subunit and a large 60S subunit. Together these subunits are composed of four RNA species and approximately 80 structurally distinct proteins. This gene encodes a ribosomal protein that is a component of the 40S subunit. The protein belongs to the S17E family of ribosomal proteins and is located in the cytoplasm. Mutations in this gene cause Diamond-Blackfan anemia 4. Alternative splicing of this gene results in multiple transcript variants. As is typical for genes encoding ribosomal proteins, there are multiple processed pseudogenes of this gene dispersed through the genome.

Overview

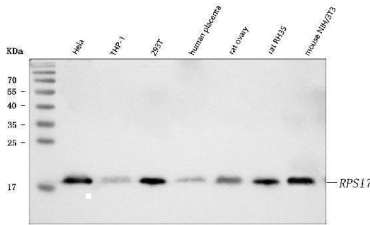
Product Name	Anti-RPS17 Antibody Picoband®
Reactive Species	Human, Mouse, Rat
Description	Boster Bio Anti-RPS17 Antibody Picoband® catalog # A05831-1. Tested in ELISA, Flow Cytometry, IF, ICC, IHC, WB applications. This antibody reacts with Human, Mouse, Rat. The brand Picoband indicates this is a premium antibody that guarantees superior quality, high affinity, and strong signals with minimal background in Western blot applications. Only our best-performing antibodies are designated as Picoband, ensuring unmatched performance.
Application	ELISA, Flow Cytometry, IF, IHC, ICC, WB
Clonality	Polyclonal
Formulation	Each vial contains 4 mg Trehalose, 0.9 mg NaCl, 0.2 mg Na ₂ HPO ₄ .
Storage Instructions	At -20°C for one year from date of receipt. After reconstitution, at 4°C for one month. It can also be aliquotted and stored frozen at -20°C for six months. Avoid repeated freezing and thawing.
Host	Rabbit
Uniprot ID	P08708

Technical Details

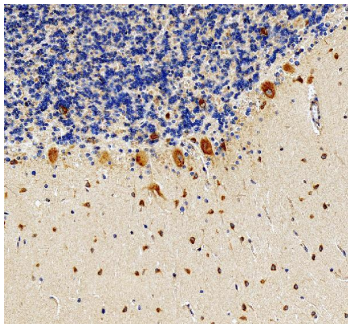
Immunogen	E.coli-derived human RPS17 recombinant protein (Position: M1-V135).
Recommended Detection Systems	Boster recommends Enhanced Chemiluminescent Kit with anti-Rabbit IgG (EK1002) for Western blot, and HRP Conjugated anti-Rabbit IgG Super Vision Assay Kit (SV0002-1) for ICC.
Cross Reactivity	No cross-reactivity with other proteins.
Isotype	Rabbit IgG
Form	Lyophilized

Concentration	Adding 0.2 ml of distilled water will yield a concentration of 500 µg/ml.
Purification	Immunogen affinity purified.
Suggested Dilutions	Western blot, 0.25-0.5 ug/ml, Human, Mouse, Rat Immunohistochemistry(Paraffin-embedded Section), 2-5 ug/ml, Human Immunocytochemistry/Immunofluorescence, 5 ug/ml, Human Flow Cytometry (Fixed), 1-3 ug/1x10 ⁶ cells, Human ELISA, 0.1-0.5 ug/ml, -

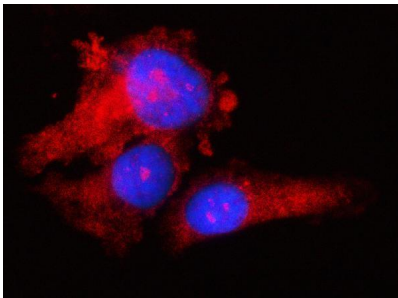
Anti-RPS17 Antibody Picoband® (A05831-1) Images



Western blot analysis of RPS17 using anti-RPS17 antibody (A05831-1). Electrophoresis was performed on a 5-20% SDS-PAGE gel at 70V (Stacking gel) / 90V (Resolving gel) for 2-3 hours. The sample well of each lane was loaded with 30 ug of sample under reducing conditions. Lane 1: human HeLa whole cell lysates, Lane 2: human THP-1 whole cell lysates, Lane 3: human 293T whole cell lysates, Lane 4: human placenta tissue lysates, Lane 5: rat ovary tissue lysates, Lane 6: rat RH35 whole cell lysates, Lane 7: mouse NIH/3T3 whole cell lysates. After electrophoresis, proteins were transferred to a nitrocellulose membrane at 150 mA for 50-90 minutes. Blocked the membrane with 5% non-fat milk/TBS for 1.5 hour at RT. The membrane was incubated with rabbit anti-RPS17 antigen affinity purified polyclonal antibody (Catalog # A05831-1) at 0.5 ug/mL overnight at 4°C, then washed with TBS-0.1%Tween 3 times with 5 minutes each and probed with a goat anti-rabbit IgG-HRP secondary antibody at a dilution of 1:5000 for 1.5 hour at RT. The signal is developed using an Enhanced Chemiluminescent detection (ECL) kit (Catalog # EK1002) with Tanon 5200 system. A specific band was detected for RPS17 at approximately 18 kDa. The expected band size for RPS17 is at 16 kDa.

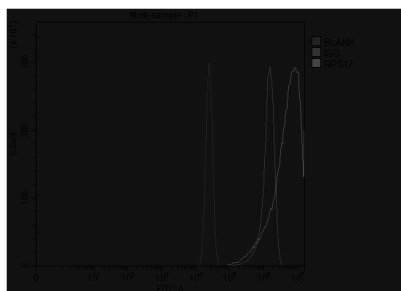


IHC analysis of RPS17 using anti-RPS17 antibody (A05831-1). RPS17 was detected in a paraffin-embedded section of human cerebellum tissue. Heat mediated antigen retrieval was performed in EDTA buffer (pH 8.0, epitope retrieval solution). The tissue section was blocked with 10% goat serum. The tissue section was then incubated with 2 ug/ml rabbit anti-RPS17 Antibody (A05831-1) overnight at 4°C. Peroxidase Conjugated Goat Anti-rabbit IgG was used as secondary antibody and incubated for 30 minutes at 37°C. The tissue section was developed using HRP Conjugated Rabbit IgG Super Vision Assay Kit (Catalog # SV0002) with DAB as the chromogen.



IF analysis of RPS17 using anti-RPS17 antibody (A05831-1). RPS17 was detected in an immunocytochemical section of PC3 cells. Enzyme antigen retrieval was performed using IHC enzyme antigen retrieval reagent (AR0022) for 15 mins. The cells were blocked with 10% goat serum. And then incubated with 5 ug/mL rabbit anti-RPS17 Antibody (A05831-1) overnight at 4°C. Cy3 Conjugated Goat Anti-Rabbit IgG (BA1032) was used as secondary antibody at 1:500 dilution and incubated for 30 minutes at 37°C. The section was counterstained with DAPI. Visualize using a fluorescence microscope and filter sets appropriate for the label used.

Flow Cytometry analysis of A431 cells using anti-RPS17 antibody (A05831-1). Overlay histogram showing A431 cells



stained with A05831-1 (Blue line). To facilitate intracellular staining, cells were fixed with 4% paraformaldehyde and permeabilized with permeabilization buffer. The cells were blocked with 10% normal goat serum. And then incubated with rabbit anti-RPS17 Antibody (A05831-1, 1 ug/1x10⁶ cells) for 30 min at 20°C. DyLight®488 conjugated goat anti-rabbit IgG (BA1127, 5-10 ug/1x10⁶ cells) was used as secondary antibody for 30 minutes at 20°C. Isotype control antibody (Green line) was rabbit IgG (1 ug/1x10⁶) used under the same conditions. Unlabelled sample without incubation with primary antibody and secondary antibody (Red line) was used as a blank control.

Submit a product review to Biocompare.com

Submit a review of this product to Biocompare.com to receive a \$20 Amazon.com giftcard! Your reviews help your fellow scientists make the right decisions. Thank you for your contribution.



Anti-RPS17 Antibody

For Research Use Only. Not for use in diagnostic procedures.