

## Anti-TUBB2B Antibody (N-term)

Catalog Number: A05849

### About TUBB2B

The protein encoded by this gene is a beta isoform of tubulin, which binds GTP and is a major component of microtubules. This gene is highly similar to TUBB2A and TUBB2C. Defects in this gene are a cause of asymmetric polymicrogyria. [provided by RefSeq].

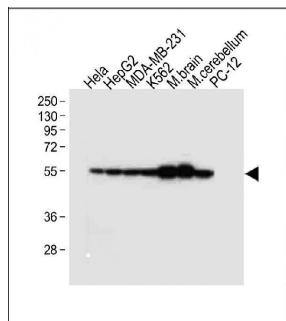
### Overview

Product Name	Anti-TUBB2B Antibody (N-term)
Reactive Species	Human, Mouse, Rat
Description	Boster Bio Anti-TUBB2B Antibody (N-term) (Catalog # A05849). Tested in WB, IF, IHC-P-Leica application(s). This antibody reacts with Human, Mouse, Rat.
Application	IF, WB, IHC-P-Leica
Clonality	Polyclonal
Formulation	Purified polyclonal antibody supplied in PBS with 0.09% (W/V) sodium azide.
Storage Instructions	Maintain refrigerated at 2-8°C for up to 2 weeks. For long-term storage, store at -20°C in small aliquots to prevent freeze-thaw cycles.
Host	Rabbit
Uniprot ID	Q9BVA1

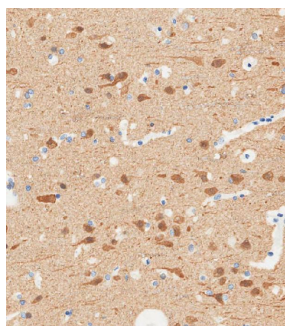
### Technical Details

Immunogen	This TUBB2B antibody is generated from rabbits immunized with a KLH conjugated synthetic peptide between 12-39 amino acids from the N-terminal region of human TUBB2B.
Predicted Reactive Species	Bovine, Chicken, Monkey, Pig, Xenopus
Isotype	Rabbit IgG
Purification	This antibody is purified through a protein A column, followed by peptide affinity purification.
Suggested Dilutions	WB: 1:4000 IHC-P-Leica: 1:2000 IF: 1:10-1:50

## Anti-TUBB2B Antibody (N-term) (A05849) Images



All lanes : Anti-TUBB2B Antibody (N-term) at 1:4000 dilution  
Lane 1: HeLa whole cell lysate  
Lane 2: HepG2 whole cell lysate  
Lane 3: MDA-MB-231 whole cell lysate  
Lane 4: K562 whole cell lysate  
Lane 5: Mouse brain tissue lysate  
Lane 6: Mouse cerebellum tissue lysate  
Lane 7: PC-12 whole cell lysate  
Lysates/proteins at 20 µg per lane. Secondary Goat Anti-Rabbit IgG, (H+L), Peroxidase conjugated at 1/10000 dilution. Predicted band size : 50 kDa  
Blocking/Dilution buffer: 5% NFDm/TBST.



Immunohistochemical analysis of paraffin-embedded Human brain tissue using A05849 performed on the Leica® BOND RXm. Tissue was fixed with formaldehyde at room temperature, antigen retrieval was by heat mediation with a EDTA buffer (pH9. 0). Samples were incubated with primary antibody (1:2000) for 1 hours at room temperature. A undiluted biotinylated CRF Anti-Polyvalent HRP Polymer antibody was used as the secondary antibody.

### Submit a product review to Biocompare.com

Submit a review of this product to Biocompare.com to receive a \$20 Amazon.com giftcard! Your reviews help your fellow scientists make the right decisions. Thank you for your contribution.



Anti-TUBB2B Antibody (N-term)

For Research Use Only. Not for use in diagnostic procedures.