

Anti-HIP2 Antibody (Center)

Catalog Number: A05895-1

About UBE2K

HIP2 belongs to the ubiquitin-conjugating enzyme family. It binds selectively to a large region at the N terminus of huntingtin. This interaction is not influenced by the length of the huntingtin polyglutamine tract. This protein has been implicated in the degradation of huntingtin and suppression of apoptosis.

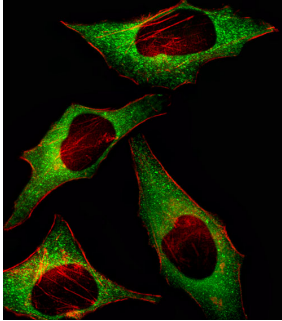
Overview

Product Name	Anti-HIP2 Antibody (Center)
Reactive Species	Human, Mouse
Description	Boster Bio Anti-HIP2 Antibody (Center) (Catalog # A05895-1). Tested in IHC-P, IF, WB application(s). This antibody reacts with Human, Mouse.
Application	IF, IHC-P, WB
Clonality	Polyclonal
Formulation	Purified polyclonal antibody supplied in PBS with 0.09% (W/V) sodium azide.
Storage Instructions	Maintain refrigerated at 2-8°C for up to 2 weeks. For long-term storage, store at -20°C in small aliquots to prevent freeze-thaw cycles.
Host	Rabbit
Uniprot ID	P61086

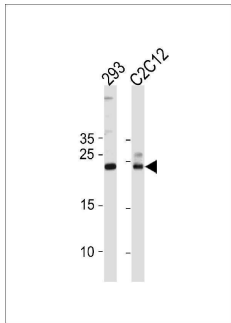
Technical Details

Immunogen	This HIP2 antibody is generated from rabbits immunized with a KLH conjugated synthetic peptide between 109-139 amino acids from the Central region of human HIP2.
Predicted Reactive Species	Bovine
Isotype	Rabbit IgG
Purification	This antibody is prepared by Saturated Ammonium Sulfate (SAS) precipitation followed by dialysis against PBS.
Suggested Dilutions	IF: 1:10-1:50 WB: 1:1000 IHC-P: 1:100

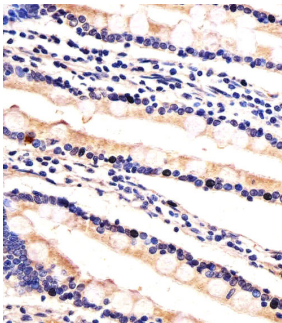
Anti-HIP2 Antibody (Center) (A05895-1) Images



Fluorescent image of HeLa cell stained with HIP2 Antibody (Center). HeLa cells were fixed with 4% PFA (20 min), permeabilized with Triton X-100 (0.1%, 10 min), then incubated with HIP2 primary antibody (1:25, 1 h at 37°C). For secondary antibody, Alexa Fluor® 488 conjugated donkey anti-rabbit antibody (green) was used (1:400, 50 min at 37°C). Cytoplasmic actin was counterstained with Alexa Fluor® 555 (red) conjugated Phalloidin (7 units/ml, 1 h at 37°C). HIP2 immunoreactivity is localized to Cytoplasm significantly.



HIP2 Antibody (D124) western blot analysis in 293, mouse C2C12 cell line lysates (35 µg/lane). This demonstrates the HIP2 antibody detected the HIP2 protein (arrow).



Immunohistochemical analysis of paraffin-embedded H. small intestine section using HIP2 Antibody (Center). A05895-1 was diluted at 1:100 dilution. A undiluted biotinylated goat polyvalent antibody was used as the secondary, followed by DAB staining.

Submit a product review to Biocompare.com

Submit a review of this product to Biocompare.com to receive a \$20 Amazon.com giftcard! Your reviews help your fellow scientists make the right decisions. Thank you for your contribution.



Anti-HIP2 Antibody (Center)

For Research Use Only. Not for use in diagnostic procedures.