

Anti-Mitochondrial Rho GTPase 1 RHOT1 Antibody

Catalog Number: A05928

About RHOT1

The Ras homolog family member T1 (RHOT) is an atypical Rho Ca²⁺-binding GTPase that localizes to the mitochondria (1). RHOT1, the related protein RHOT2, the adaptor protein Milton, and the PTEN induced putative kinase 1 (PINK1), form a complex that is involved in axonal transport of mitochondria (2,3). Both PINK1 and Parkin target RHOT1 for phosphorylation and degradation, causing the arrest of mitochondrial motility (4).

Overview

Product Name	Anti-Mitochondrial Rho GTPase 1 RHOT1 Antibody
Reactive Species	Human, Mouse, Rat
Description	Boster Bio Anti-Mitochondrial Rho GTPase 1 RHOT1 Antibody (Catalog # A05928). Tested in ELISA, WB, IHC-P, IF applications. This antibody reacts with Human, Mouse, Rat.
Application	ELISA, IF, IHC-P, WB
Clonality	Polyclonal
Formulation	RHOT1 antibody is supplied in PBS containing 0.02% sodium azide.
Storage Instructions	RHOT1 antibody can be stored at 4°C for three months and -20°C, stable for up to one year.
Host	Rabbit
Uniprot ID	Q8IXI2

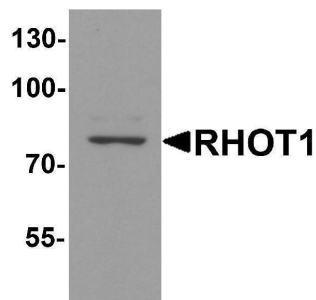
Technical Details

Immunogen	RHOT1 antibody was raised against a 15 amino acid peptide near the amino terminus of human RHOT1. The immunogen is located within amino acids 40 - 90 of RHOT1.
Predicted Reactive Species	Bovine, Chicken
Cross Reactivity	RHOT1 antibody is human, mouse and rat reactive. At least three isoforms of RHOT1 are known to exist; this antibody will detect all three isoforms.
Isotype	IgG
Form	Liquid
Concentration	1 mg/mL
Purification	RHOT1 antibody is affinity chromatography purified via peptide column.
Suggested Dilutions	RHOT1 antibody can be used for detection of RHOT1 by Western blot at 1 - 2 ug/ml. Antibody can also be used for immunohistochemistry starting at 5 ug/mL. For immunofluorescence start at 20

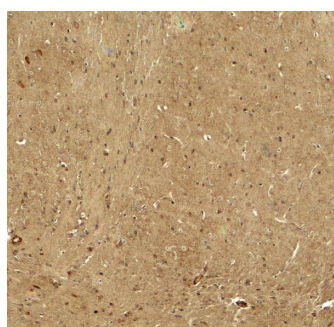
ug/mL.

Antibody validated: Western Blot in rat samples; Immunohistochemistry in mouse samples and Immunofluorescence in mouse samples. All other applications and species not yet tested. Optimal dilutions for each application should be determined by the researcher.

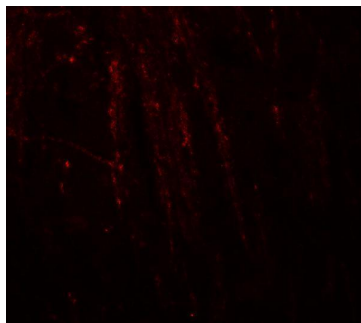
Anti-Mitochondrial Rho GTPase 1 RHOT1 Antibody (A05928) Images



Western blot analysis of RHOT1 in rat brain tissue lysate with RHOT1 antibody at 1 ug/ml.



Immunohistochemistry of RHOT in mouse brain tissue with RHOT antibody at 5 ug/ml.



Immunofluorescence of RHOT in mouse brain tissue with RHOT antibody at 20 ug/ml.

Submit a product review to Biocompare.com

Submit a review of this product to Biocompare.com to receive a \$20 Amazon.com giftcard! Your reviews help your fellow scientists make the right decisions. Thank you for your contribution.



Anti-Mitochondrial Rho GTPase 1 RHOT1 Antibody
For Research Use Only. Not for use in diagnostic procedures.