

Anti-ZBRK1 ZNF350 Antibody

Catalog Number: A05943

About ZNF350

ZBRK1 is a member of the Kruppel-associated box-zinc finger protein (KRAB-ZFP) protein family of transcriptional repressors. ZBRK1 has been shown to not only be up-regulated in senescent fibroblasts but also interacts with BRCA1, a transcriptional regulator with tumor suppressor activity. ZBRK1 binds to a specific sequence within the GADD45 gene, supporting the assembly of a nuclear complex containing BRCA1 and repressing its transcription. Recent experiments demonstrate that ZBRK1 can homo-oligomerize in vitro and in vivo through a C-terminal transcriptional repression domain (CTRD), and this oligomerization facilitates the ZBRK1-directed transcriptional repression through ZBRK1 response elements. These results suggest that higher order ZBRK1 oligomers may assemble through both protein-DNA and CTRD-dependent protein-protein interactions.

Overview

Product Name	Anti-ZBRK1 ZNF350 Antibody
Reactive Species	Human, Mouse, Rat
Description	Boster Bio Anti-ZBRK1 ZNF350 Antibody (Catalog # A05943). Tested in ELISA, WB applications. This antibody reacts with Human, Mouse, Rat.
Application	ELISA, WB
Clonality	Polyclonal
Formulation	ZBRK1 Antibody is supplied in PBS containing 0.02% sodium azide.
Storage Instructions	Antibody can be stored at 4°C up to one year. Antibodies should not be exposed to prolonged high temperatures.
Host	Rabbit
Uniprot ID	Q9GZX5

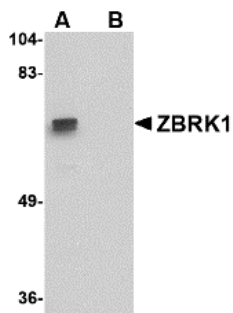
Technical Details

Immunogen	ZBRK1 antibody was raised against a 20 amino acid synthetic peptide near the carboxy terminus of the human ZBRK1. The immunogen is located within amino acids 410 - 460 of ZBRK1.
Predicted Reactive Species	Bovine, Chicken
Isotype	IgG
Form	Liquid
Concentration	1 mg/mL
Purification	ZBRK1 Antibody is affinity chromatography purified via peptide column.

Suggested Dilutions

ZBRK1 antibody can be used for detection of ZBRK1 by Western blot at 1 ug/mL.
Antibody validated: Western Blot in mouse samples. All other applications and species not yet tested. Optimal dilutions for each application should be determined by the researcher.

Anti-ZBRK1 ZNF350 Antibody (A05943) Images



Western blot analysis of ZBRK1 in A-20 lysate with ZBRK1 antibody at 1 ug/mL in (A) the absence and (B) the presence of blocking peptide.

Submit a product review to Biocompare.com

Submit a review of this product to Biocompare.com to receive a \$20 Amazon.com giftcard! Your reviews help your fellow scientists make the right decisions. Thank you for your contribution.



Anti-ZBRK1 ZNF350 Antibody

For Research Use Only. Not for use in diagnostic procedures.