

## Anti-ZFX Antibody

Catalog Number: A05947

### About ZFX

The X-linked zinc finger protein ZFX is a member of the Kruppel C2H2-type zinc-finger protein family. The full-length protein contains an acidic transcriptional activation domain (AD), a nuclear localization sequence (NLS) and a DNA binding domain (DBD) consisting of 13 C2H2-type zinc fingers. Studies in mouse embryonic and adult hematopoietic stem cells showed that this gene was required as a transcriptional regulator for self-renewal of both stem cell types, but it was dispensable for growth and differentiation of their progeny.

### Overview

Product Name	Anti-ZFX Antibody
Reactive Species	Human, Mouse, Rat
Description	Boster Bio Anti-ZFX Antibody (Catalog # A05947). Tested in ELISA, WB, IHC-P, IF applications. This antibody reacts with Human, Mouse, Rat.
Application	ELISA, IF, IHC-P, WB
Clonality	Polyclonal
Formulation	ZFX Antibody is supplied in PBS containing 0.02% sodium azide.
Storage Instructions	ZFX antibody can be stored at 4°C for three months and -20°C, stable for up to one year. Avoid repeated freeze-thaw cycles. Antibodies should not be exposed to prolonged high temperatures.
Host	Rabbit
Uniprot ID	P17010

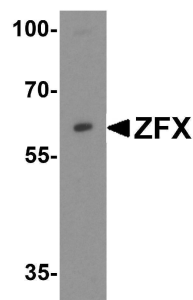
### Technical Details

Immunogen	ZFX antibody was raised against a 19 amino acid synthetic peptide near the carboxy terminus of human ZFX. The immunogen is located within the last 50 amino acids of ZFX.
Predicted Reactive Species	Bovine
Cross Reactivity	ZFX antibody is human, mouse and rat reactive. Multiple isoforms of ZFX are known to exist. ZFX antibody will detect isoform 1 and 2 of ZFX.
Isotype	IgG
Form	Liquid
Concentration	1 mg/mL
Purification	ZFX Antibody is affinity chromatography purified via peptide column.

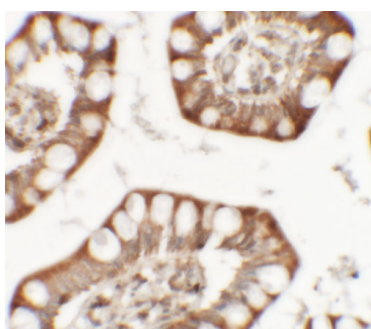
Suggested Dilutions

ZFX antibody can be used for detection of ZFX by Western blot at 1 ug/mL. Antibody can also be used for immunohistochemistry starting at 5 ug/mL. For immunofluorescence start at 5 ug/mL. Antibody validated: Western Blot in human samples; Immunohistochemistry in human samples and Immunofluorescence in human samples. All other applications and species not yet tested. Optimal dilutions for each application should be determined by the researcher.

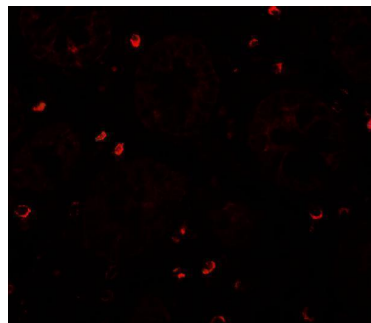
## Anti-ZFX Antibody (A05947) Images



Western blot analysis of ZFX in Daudi cell lysate with ZFX antibody at 1 ug/mL.



Immunohistochemistry of ZFX in human small intestine tissue with ZFX antibody at 5 ug/mL.



Immunofluorescence of ZFX in human small intestine tissue with ZFX antibody at 20 ug/mL.

### Submit a product review to [Biocompare.com](https://www.biocompare.com)

Submit a review of this product to [Biocompare.com](https://www.biocompare.com) to receive a \$20 Amazon.com giftcard! Your reviews help your fellow scientists make the right decisions. Thank you for your contribution.



Anti-ZFX Antibody

For Research Use Only. Not for use in diagnostic procedures.