

Anti-Proline-rich protein 5 PRR5 Antibody

Catalog Number: A05975

About PRR5

Proline-rich protein 5 (PRR5), also known as Protor-1, is a 388 amino acid protein in Protor family, is thought to act as a tumor suppressor in breast and colorectal tumorigenesis. PRR5 is widely expressed and possesses two RICTOR interaction sites and a C-terminal Proline rich region. It promotes Rapamycin complex 2 (mTORC2) activity. There are four isoforms of PRR5 that are produced as a result of alternative splicing events and these isoforms play an important role in the modulation of platelet-derived growth factor signaling and in the regulation of PDGFR-beta expression.

Overview

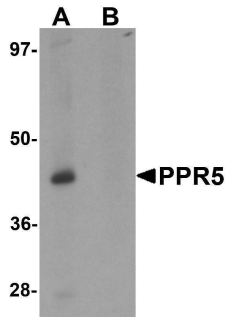
Product Name	Anti-Proline-rich protein 5 PRR5 Antibody
Reactive Species	Human, Mouse, Rat
Description	Boster Bio Anti-Proline-rich protein 5 PRR5 Antibody (Catalog # A05975). Tested in ELISA, WB, IHC-P, IF applications. This antibody reacts with Human, Mouse, Rat.
Application	ELISA, IF, IHC-P, WB
Clonality	Polyclonal
Formulation	PRR5 Antibody is supplied in PBS containing 0.02% sodium azide.
Storage Instructions	PRR5 antibody can be stored at 4°C for three months and -20°C, stable for up to one year. Avoid repeated freeze-thaw cycles. Antibodies should not be exposed to prolonged high temperatures.
Host	Rabbit
Uniprot ID	P85299

Technical Details

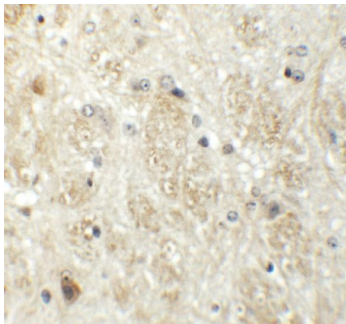
Immunogen	PRR5 antibody was raised against a 20 amino acid synthetic peptide near the carboxy terminus of human PRR5. The immunogen is located within amino acids 310 - 360 of PRR5.
Predicted Reactive Species	Bovine
Cross Reactivity	PRR5 antibody is predicted to not cross-react with other Protor protein family members.
Isotype	IgG
Form	Liquid
Concentration	1 mg/mL
Purification	PRR5 Antibody is affinity chromatography purified via peptide column.
Suggested Dilutions	PRR5 antibody can be used for detection of PRR5 by Western blot at 1 ug/mL. Antibody can also be

used for immunohistochemistry starting at 5 ug/mL. For immunofluorescence start at 20 ug/mL. Antibody validated: Western Blot in human samples; Immunohistochemistry in mouse samples and Immunofluorescence in mouse samples. All other applications and species not yet tested. Optimal dilutions for each application should be determined by the researcher.

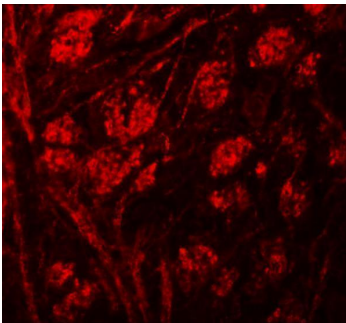
Anti-Proline-rich protein 5 PRR5 Antibody (A05975) Images



Western blot analysis of PRR5 in SK-N-SH cell lysate with PRR5 antibody at 1 ug/mL in (A) the absence and (B) the presence of blocking peptide



Immunohistochemistry of PPR5 in mouse brain tissue with PRR5 antibody at 5 ug/mL.



Immunofluorescence of PPR5 in mouse brain tissue with PRR5 antibody at 20 ug/mL.

Submit a product review to [Biocompare.com](https://www.biocompare.com)

Submit a review of this product to [Biocompare.com](https://www.biocompare.com) to receive a \$20 Amazon.com giftcard! Your reviews help your fellow scientists make the right decisions. Thank you for your contribution.



Anti-Proline-rich protein 5 PRR5 Antibody

For Research Use Only. Not for use in diagnostic procedures.