

Anti-PFKFB2 (phospho-S483) Antibody

Catalog Number: A05977S483

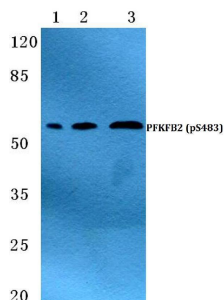
Overview

| | |
|----------------------|--|
| Product Name | Anti-PFKFB2 (phospho-S483) Antibody |
| Reactive Species | Human, Mouse, Rat |
| Description | Boster Bio Anti-PFKFB2 (phospho-S483) Antibody catalog # A05977S483. Tested in WB,IHC applications. This antibody reacts with Human,Mouse,Rat. |
| Application | IHC, WB |
| Clonality | Polyclonal |
| Formulation | Rabbit IgG, 1mg/ml in PBS with 0.02% sodium azide, 50% glycerol, pH7.2 |
| Storage Instructions | Store at -20°C for one year. For short term storage and frequent use, store at 4°C for up to one month. Avoid repeated freeze-thaw cycles. |
| Host | Rabbit |
| Uniprot ID | O60825 |

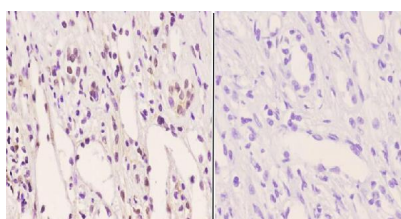
Technical Details

| | |
|---------------------|---|
| Immunogen | Synthetic phosphopeptide derived from human PFKFB2 around the phosphorylation site of Serine 483. |
| Isotype | IgG |
| Form | Liquid |
| Concentration | 1 mg/ml |
| Purification | The antibody was affinity-purified from rabbit antiserum by affinity-chromatography using epitope-specific immunogen and the purity is > 95% (by SDS-PAGE). |
| Suggested Dilutions | WB: 1:500-1:1000 IHC: 1:50-1:200 |

Anti-PFKFB2 (phospho-S483) Antibody (A05977S483) Images



Western blot (WB) analysis of p-PFKFB2 (S483) polyclonal antibody at 1:500 dilution Lane1:Hela cell lysate treated with H₂O₂(100μM,30mins) Lane2:sp2/0 cell lysate treated with H₂O₂(100μM,30mins) Lane3:H9C2 cell lysate treated with H₂O₂(100μM,30mins)



Immunohistochemistry (IHC) analyzes of p-PFKFB2 (S483) pAb in paraffin-embedded human kidney carcinoma tissue at 1:50, showing cytoplasmic and nucleus staining. Negative control (the right) Using PBS instead of primary antibody, secondary antibody is Goat Anti-Rabbit IgG-biotin followed by avidin-peroxidase.

Submit a product review to Biocompare.com

Submit a review of this product to Biocompare.com to receive a \$20 Amazon.com giftcard! Your reviews help your fellow scientists make the right decisions. Thank you for your contribution.



Anti-PFKFB2 (phospho-S483) Antibody

For Research Use Only. Not for use in diagnostic procedures.