

## Anti-Carboxypeptidase A/CPA1 Antibody Picoband™

Catalog Number: A05985-1

### About CPA1

Carboxypeptidase A1 is an enzyme that in humans is encoded by the CPA1 gene. This gene encodes a member of the carboxypeptidase A family of zinc metalloproteases. This enzyme is produced in the pancreas and preferentially cleaves C-terminal branched-chain and aromatic amino acids from dietary proteins. This gene and several family members are present in a gene cluster on chromosome 7. Mutations in this gene may be linked to chronic pancreatitis, while elevated protein levels may be associated with pancreatic cancer.

### Overview

Product Name	Anti-Carboxypeptidase A/CPA1 Antibody Picoband™
Reactive Species	Mouse, Rat
Description	Boster Bio Anti-Carboxypeptidase A/CPA1 Antibody Picoband™ catalog # A05985-1. Tested in WB applications. This antibody reacts with Mouse, Rat.
Application	WB
Clonality	Polyclonal
Formulation	Each vial contains 4mg Trehalose, 0.9mg NaCl, 0.2mg Na <sub>2</sub> HPO <sub>4</sub> , 0.05mg NaN <sub>3</sub> .
Storage Instructions	Store at -20°C for one year from date of receipt. After reconstitution, at 4°C for one month. It can also be aliquotted and stored frozen at -20°C for six months. Avoid repeated freeze-thaw cycles.
Host	Rabbit
Uniprot ID	P15085

### Technical Details

Immunogen	A synthetic peptide corresponding to a sequence in the middle region of human Carboxypeptidase A, which shares 84.8% and 87% amino acid (aa) sequence identity with mouse and rat Carboxypeptidase A, respectively.
Recommended Detection Systems	Boster recommends Enhanced Chemiluminescent Kit with anti-Rabbit IgG (EK1002) for Western blot.
Cross Reactivity	No cross-reactivity with other proteins.
Isotype	Rabbit IgG
Form	Lyophilized
Concentration	Adding 0.2 ml of distilled water will yield a concentration of 500 ug/ml.
Purification	Immunogen affinity purified.

**Suggested Dilutions**

Dilute the sample so that the expected range of concentrations fall within the detection range of this kit.

If the expected range of concentration is unknown, a pilot test should be conducted to decide the optimal dilution ratio for your samples.

Some PubMed article(s) citing the expression level of this target are as follows:

Boster Bio's internal QC testing used:

Western blot, 0.1-0.5ug/ml

## Anti-Carboxypeptidase A/CPA1 Antibody Picoband™ (A05985-1) Images

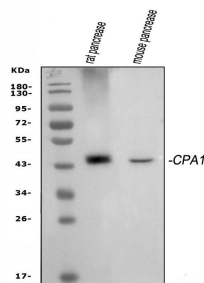


Figure 1. Western blot analysis of Carboxypeptidase A/CPA1 using anti-Carboxypeptidase A/CPA1 antibody (A05985-1). Electrophoresis was performed on a 5-20% SDS-PAGE gel at 70V (Stacking gel) / 90V (Resolving gel) for 2-3 hours. The sample well of each lane was loaded with 30 ug of sample under reducing conditions.

Lane 1: rat pancreas tissue lysates,

Lane 2: mouse pancreas tissue lysates.

After electrophoresis, proteins were transferred to a nitrocellulose membrane at 150 mA for 50-90 minutes. Blocked the membrane with 5% non-fat milk/TBS for 1.5 hour at RT. The membrane was incubated with rabbit anti-Carboxypeptidase A/CPA1 antigen affinity purified polyclonal antibody (Catalog # A05985-1) at 0.5 ug/mL overnight at 4°C, then washed with TBS-0.1%Tween 3 times with 5 minutes each and probed with a goat anti-rabbit IgG-HRP secondary antibody at a dilution of 1:5000 for 1.5 hour at RT. The signal is developed using an Enhanced Chemiluminescent detection (ECL) kit (Catalog # EK1002) with Tanon 5200 system. A specific band was detected for Carboxypeptidase A/CPA1 at approximately 47 kDa. The expected band size for Carboxypeptidase A/CPA1 is at 47 kDa.

### Submit a product review to Biocompare.com

Submit a review of this product to Biocompare.com to receive a \$20 Amazon.com giftcard! Your reviews help your fellow scientists make the right decisions. Thank you for your contribution.



Anti-Carboxypeptidase A/CPA1 Antibody™