

## Anti-Protein TMEPAI PMEPA1 Antibody

Catalog Number: A05994-1

### About PMEPA1

The prostate transmembrane protein, androgen induced 1 (PMEPA1) protein is a transmembrane protein that contains a Smad interacting motif (SIM) (1,2). Expression of this gene is induced by androgens and transforming growth factor beta, and the encoded protein suppresses the androgen receptor and transforming growth factor beta signaling pathways through interactions with Smad proteins (3). Overexpression of this gene may play a role in multiple types of cancer (2,4).

### Overview

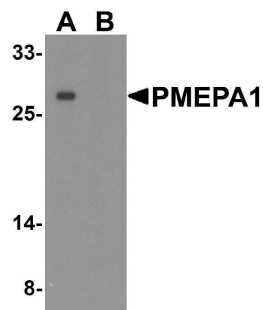
Product Name	Anti-Protein TMEPAI PMEPA1 Antibody
Reactive Species	Human, Mouse, Rat
Description	Boster Bio Anti-Protein TMEPAI PMEPA1 Antibody (Catalog # A05994-1). Tested in ELISA, WB, IHC-P applications. This antibody reacts with Human, Mouse, Rat.
Application	ELISA, IHC-P, WB
Clonality	Polyclonal
Formulation	PMEPA1 antibody is supplied in PBS containing 0.02% sodium azide.
Storage Instructions	PMEPA1 antibody can be stored at 4°C for three months and -20°C, stable for up to one year.
Host	Rabbit
Uniprot ID	Q969W9

### Technical Details

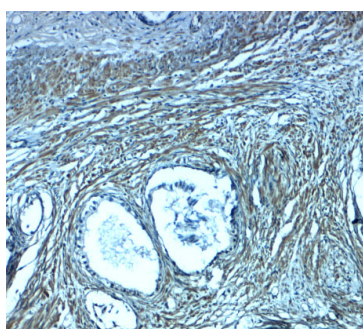
Immunogen	PMEPA1 antibody was raised against a 16 amino acid peptide near the center of human PMEPA1. The immunogen is located within amino acids 160 - 210 of PMEPA1.
Predicted Reactive Species	Bovine
Cross Reactivity	PMEPA1 antibody is human, mouse and rat reactive. At least four isoforms are known to exist; this antibody will detect all of the isoforms.
Isotype	IgG
Form	Liquid
Concentration	1 mg/mL
Purification	PMEPA1 antibody is affinity chromatography purified via peptide column.
Suggested Dilutions	PMEPA1 antibody can be used for detection of PMEPA1 by Western blot at 1 - 2 ug/ml. Antibody

can also be used for immunohistochemistry starting at 2.5 ug/mL.  
Antibody validated: Western Blot in human samples and Immunohistochemistry in human samples.  
All other applications and species not yet tested. Optimal dilutions for each application should be determined by the researcher.

## Anti-Protein TMEPAI PMEPA1 Antibody (A05994-1) Images



Western blot analysis of PMEPA1 in A549 cell lysate with PMEPA1 antibody at 1 ug/ml in (A) the absence and (B) the presence of blocking peptide.



Immunohistochemistry of PMEPA1 in human prostate tissue with PMEPA1 antibody at 2.5 ug/ml.

### Submit a product review to [Biocompare.com](https://www.biocompare.com)

Submit a review of this product to [Biocompare.com](https://www.biocompare.com) to receive a \$20 Amazon.com giftcard! Your reviews help your fellow scientists make the right decisions. Thank you for your contribution.



Anti-Protein TMEPAI PMEPA1 Antibody

For Research Use Only. Not for use in diagnostic procedures.