

Anti-GTP-binding protein Rit1 RIT1 Antibody

Catalog Number: A06008

About RIT1

Plays a crucial role in coupling NGF stimulation to the activation of both EPHB2 and MAPK14 signaling pathways and in NGF-dependent neuronal differentiation. Involved in ELK1 transactivation through the Ras-MAPK signaling cascade that mediates a wide variety of cellular functions, including cell proliferation, survival, and differentiation.

Manabu Furukawa, Mol. Cell. Biol., Nov 2000; 20: 8185 - 8197.

Angus Chen, J. Biol. Chem., May 2000; 275: 15432.

Kenneth Wu, Mol. Cell. Biol., Feb 2000; 20: 1382 - 1393.

Kenneth Wu, J. Biol. Chem., Jan 2002; 277: 516 - 527.

Overview

Product Name	Anti-GTP-binding protein Rit1 RIT1 Antibody
Reactive Species	Human
Description	Boster Bio Anti-GTP-binding protein Rit1 RIT1 Antibody (Catalog # A06008). Tested in WB applications. This antibody reacts with Human.
Application	WB
Clonality	Polyclonal
Formulation	Rabbit IgG in phosphate buffered saline (without Mg ²⁺ and Ca ²⁺), pH 7.4, 150mM NaCl, 0.02% sodium azide and 50% glycerol.
Storage Instructions	Store at -20°C for one year. For short term storage and frequent use, store at 4°C for up to one month. Avoid repeated freeze-thaw cycles.
Host	Rabbit
Uniprot ID	Q92963

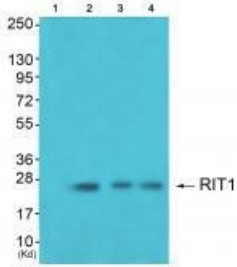
Technical Details

Immunogen	Synthesized peptide derived from human RIT1.
Isotype	IgG
Form	Liquid
Concentration	1 mg/ml
Purification	The antibody was affinity-purified from rabbit antiserum by affinity-chromatography using epitope-specific immunogen.

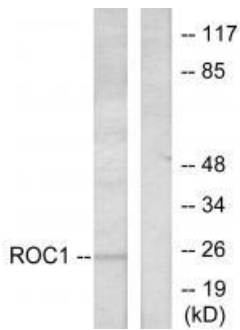
Suggested Dilutions

Western blotting: 1:500~1:3000

Anti-GTP-binding protein Rit1 RIT1 Antibody (A06008) Images



Western blot analysis of extracts from K562 cells (Lane 2), JK cells (Lane 3) and 293 cells (Lane 4), using RIT1 antibody A06008. The lane on the left is treated with synthesized peptide.



Western blot analysis of extracts from Jurkat cells, using RIT1 antibody A06008.

Submit a product review to Biocompare.com

Submit a review of this product to Biocompare.com to receive a \$20 Amazon.com giftcard! Your reviews help your fellow scientists make the right decisions. Thank you for your contribution.



Anti-GTP-binding protein Rit1 RIT1 Antibody