

## Anti-GTP-binding protein Rit1 Rit1 Antibody

Catalog Number: A06008-1

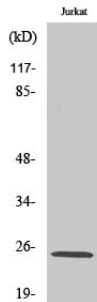
### Overview

|                      |  |
|----------------------|--|
| Product Name         | Anti-GTP-binding protein Rit1 Rit1 Antibody  |
| Reactive Species     | Human, Mouse   |
| Description          | Boster Bio Anti-GTP-binding protein Rit1 Rit1 Antibody catalog # A06008-1. Tested in WB, ELISA, IHC applications. This antibody reacts with Human, Mouse.  |
| Application          | ELISA, IHC, WB   |
| Clonality            | Polyclonal   |
| Formulation          | Liquid in PBS containing 50% glycerol, 0.5% stabilizing protein and 0.02% sodium azide.<br>*This antibody is supplied in a stabilized formulation.<br>Compatibility with conjugation reactions depends on the chemistry of the conjugation method used. For conjugation methods that are not compatible with the stabilizing components present in this formulation, a carrier-free antibody format is required. |
| Storage Instructions | Store at -20°C for one year. For short term storage and frequent use, store at 4°C for up to one month. Avoid repeated freeze-thaw cycles.   |
| Host                 | Rabbit   |
| Uniprot ID           | Q92963   |

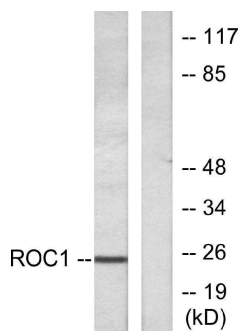
### Technical Details

|                     |  |
|---------------------|--|
| Immunogen           | The antiserum was produced against synthesized peptide derived from human RIT1. AA range:170-219 |
| Isotype             | IgG  |
| Form                | Liquid   |
| Concentration       | 1 mg/ml  |
| Purification        | Immunogen affinity purified  |
| Suggested Dilutions | WB 1:500-2000<br>IHC 1:50-300<br>ELISA 1:2000-20000  |

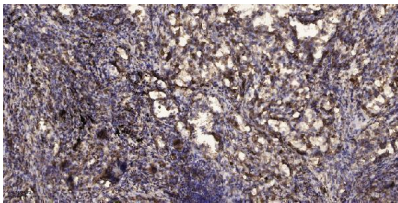
## Anti-GTP-binding protein Rit1 Rit1 Antibody (A06008-1) Images



Western Blot analysis of various cells using Rit1 Polyclonal Antibody diluted at 1:500



Western blot analysis of lysates from Jurkat cells, using RIT1 Antibody. The lane on the right is blocked with the synthesized peptide.



Immunohistochemical analysis of paraffin-embedded human Squamous cell carcinoma of lung. 1, Antibody was diluted at 1:200 (4° overnight). 2, Tris-EDTA, pH9.0 was used for antigen retrieval. 3, Secondary antibody was diluted at 1:200 (room temperature, 45min).

### Submit a product review to Biocompare.com

Submit a review of this product to Biocompare.com to receive a \$20 Amazon.com giftcard! Your reviews help your fellow scientists make the right decisions. Thank you for your contribution.



Anti-GTP-binding protein Rit1 Rit1 Antibody

For Research Use Only. Not for use in diagnostic procedures.