

Anti-Cyclin T2 CCNT2 Antibody

Catalog Number: A06015

About CCNT2

Cyclin T2 is a ubiquitously expressed nuclear protein that is a member of the highly conserved cyclin family, whose members are characterized by a dramatic periodicity in protein abundance through the cell cycle. Cyclins function as regulators of CDK kinases. Different cyclins exhibit distinct expression and degradation patterns that contribute to the temporal coordination of each mitotic event. This cyclin and its kinase partner CDK9 were found to be subunits of the transcription elongation factor p-TEFb. The p-TEFb complex containing this cyclin was reported to interact with, and act as a negative regulator of human immunodeficiency virus type 1 (HIV-1) Tat protein. Anti-Cyclin T2 Antibody is useful for researchers interested in HIV research, Gene expression, and cell cycle pathways.

Overview

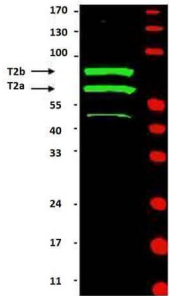
Product Name	Anti-Cyclin T2 CCNT2 Antibody
Reactive Species	Human
Description	Boster Bio Anti-Cyclin T2 CCNT2 Antibody (Catalog # A06015). Tested in ELISA, WB applications. This antibody reacts with Human.
Application	ELISA, IP, WB
Clonality	Polyclonal
Formulation	0.01% (w/v) Sodium Azide
Storage Instructions	Store vial at -20°C prior to opening. Aliquot contents and freeze at -20°C or below for extended storage. Avoid cycles of freezing and thawing. Centrifuge product if not completely clear after standing at room temperature. This product is stable for several weeks at 4°C as an undiluted liquid. Dilute only prior to immediate use. Expiration date is one (1) year from date of opening. (Ship on dry ice.)
Host	Rabbit
Uniprot ID	O60583

Technical Details

Immunogen	This antibody was prepared from whole rabbit serum produced by repeated immunizations with a recombinant protein corresponding to amino acids 1-584 of human Cyclin T2a protein.
Predicted Reactive Species	Bovine, Canine, Equine, Guinea Pig, Pig, Rabbit
Isotype	Antiserum
Form	Liquid (sterile filtered)
Concentration	85 mg/mL by Refractometry

Purification	This antibody is directed against human Cyclin T2 proteins and was prepared from monospecific antiserum by delipidation and defibrination. Antiserum will specifically react with proteins 74 and 81 kDa in size corresponding to isoforms of Cyclin T2 protein by western blot. A protein:protein BLAST analysis was used to suggest cross-reactivity with Cyclin T2a and T2b from dog (96%), bovine (93%), mouse (88%) and rat (85%) sources based on high homology with the full length protein. Reactivity against homologues from other sources is not known.
Suggested Dilutions	ELISA: 1:5,000 - 1:20,000 IP: 1:100 WB: 1:500 - 1:2,000 This antibody has been tested for use in ELISA and western blot. Specific conditions for reactivity should be optimized by the end user. Expect bands approximately 74 and 81 kDa in size corresponding to isoforms of Cyclin T2 protein by western blotting in the appropriate tissue or cell lysate or extract.

Anti-Cyclin T2 CCNT2 Antibody (A06015) Images



Western blot using Boster's Anti-Cyclin T2 (Rabbit) is shown to detect two major bands (arrowheads) corresponding to human Cyclin T2a (~74kDa) and T2b (~81kDa) as indicated. Approximately 33 μ g of a HeLa whole cell lysate was separated by 4-20% Tris Glycine SDS-PAGE. After blocking the membrane with 5% BLOTTO in PBS, the membrane was probed for overnight at 4° C with the primary antibody diluted to 1:500 in 5% BLOTTO in PBS. The membrane was washed and reacted with a 1:10,000 dilution of IRDye800 conjugated Gt-a-Rabbit IgG [H&L] (611-132-122) for 45 min at room temperature (800 nm channel, green). Molecular weight estimation was made by comparison to prestained MW markers indicated at the right (700 nm channel, red). IRDye™ 800 fluorescence image was captured using the Odyssey® Infrared Imaging System developed by LI-COR. IRDye is a trademark of LI-COR, Inc. Other detection systems will yield similar results.

Submit a product review to [Biocompare.com](https://www.biocompare.com)

Submit a review of this product to [Biocompare.com](https://www.biocompare.com) to receive a \$20 Amazon.com giftcard! Your reviews help your fellow scientists make the right decisions. Thank you for your contribution.



Anti-Cyclin T2 CCNT2 Antibody

For Research Use Only. Not for use in diagnostic procedures.