

## Anti-LLGL1 Antibody

Catalog Number: A06016

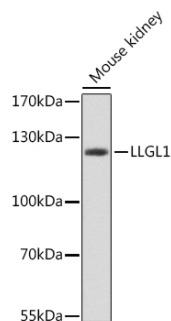
### Overview

Product Name	Anti-LLGL1 Antibody
Reactive Species	Human, Mouse
Description	Boster Bio Anti-LLGL1 Antibody catalog # A06016. Tested in IF applications. This antibody reacts with Human, Mouse.
Application	IF
Clonality	Polyclonal
Formulation	Rabbit IgG, 1mg/ml in PBS with 0.02% sodium azide, 50% glycerol, pH7.2
Storage Instructions	Store at -20°C for one year. For short term storage and frequent use, store at 4°C for up to one month. Avoid repeated freeze-thaw cycles.
Host	Rabbit
Uniprot ID	Q80Y17

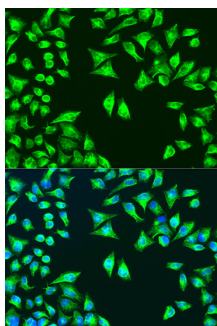
### Technical Details

Immunogen	A synthetic peptide of mouse LLGL1
Isotype	IgG
Form	Liquid
Concentration	1 mg/ml
Purification	The antibody was affinity-purified from rabbit antiserum by affinity-chromatography using epitope-specific immunogen and the purity is > 95% (by SDS-PAGE).
Suggested Dilutions	IF: 1:50-1:200

## Anti-LLGL1 Antibody (A06016) Images



Western blot analysis of extracts of mouse kidney, using LLGL1 antibody.



Immunofluorescence analysis of U2OS cells using LLGL1 antibody.

### Submit a product review to [Biocompare.com](https://www.biocompare.com)

Submit a review of this product to [Biocompare.com](https://www.biocompare.com) to receive a \$20 Amazon.com giftcard! Your reviews help your fellow scientists make the right decisions. Thank you for your contribution.



Anti-LLGL1 Antibody

For Research Use Only. Not for use in diagnostic procedures.