

Anti-Ribosomal Protein L7 RPL7 Antibody

Catalog Number: A06025

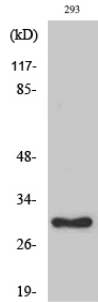
Overview

Product Name	Anti-Ribosomal Protein L7 RPL7 Antibody
Reactive Species	Human, Mouse, Rat, Cat
Description	Boster Bio Anti-Ribosomal Protein L7 RPL7 Antibody catalog # A06025. Tested in WB, IHC, IF, ELISA applications. This antibody reacts with Human, Mouse, Rat, Cat.
Application	ELISA, IF, IHC, WB
Clonality	Polyclonal
Formulation	Liquid in PBS containing 50% glycerol, 0.5% stabilizing protein and 0.02% sodium azide. *This antibody is supplied in a stabilized formulation. Compatibility with conjugation reactions depends on the chemistry of the conjugation method used. For conjugation methods that are not compatible with the stabilizing components present in this formulation, a carrier-free antibody format is required.
Storage Instructions	Store at -20°C for one year. For short term storage and frequent use, store at 4°C for up to one month. Avoid repeated freeze-thaw cycles.
Host	Rabbit
Uniprot ID	P18124

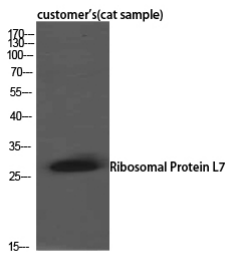
Technical Details

Immunogen	The antiserum was produced against synthesized peptide derived from human RPL7. AA range:199-248
Isotype	IgG
Form	Liquid
Concentration	1 mg/ml
Purification	Immunogen affinity purified
Suggested Dilutions	WB 1:500-1:2000 IHC 1:100-1:300 ELISA 1:10000 IF 1:50-200

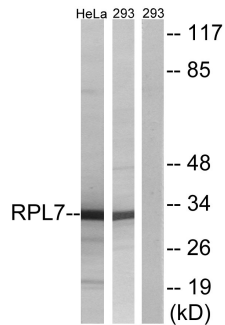
Anti-Ribosomal Protein L7 RPL7 Antibody (A06025) Images



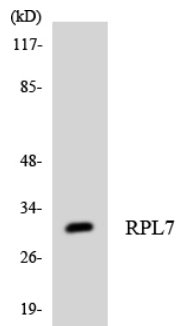
Western Blot analysis of various cells using Ribosomal Protein L7 Polyclonal Antibody diluted at 1:2000



Western Blot analysis of customer's (cat sample) using Ribosomal Protein L7 Polyclonal Antibody. Antibody was diluted at 1:2000

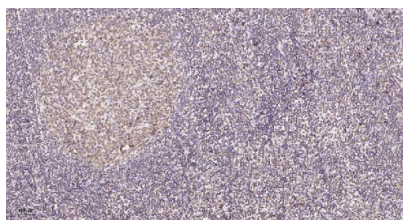


Western blot analysis of lysates from 293 and HeLa cells, using RPL7 Antibody. The lane on the right is blocked with the synthesized peptide.



Western blot analysis of the lysates from K562 cells using RPL7 antibody.

Immunohistochemical analysis of paraffin-embedded human tonsil. 1, Tris-EDTA, pH9.0 was used for antigen retrieval. 2 Antibody was diluted at 1:200 (4° overnight). 3, Secondary antibody was diluted at 1:200 (room temperature, 45min).



Submit a product review to Biocompare.com

Submit a review of this product to Biocompare.com to receive a \$20 Amazon.com giftcard! Your reviews help your fellow scientists make the right decisions. Thank you for your contribution.



Anti-Ribosomal Protein L7 RPL7 Antibody

For Research Use Only. Not for use in diagnostic procedures.