

Anti-HOXC6 Antibody (C-term)

Catalog Number: A06045-1

About HOXC6

This protein belongs to the homeobox family, members of which encode a highly conserved family of transcription factors that play an important role in morphogenesis in all multicellular organisms. Mammals possess four similar homeobox gene clusters, HOXA, HOXB, HOXC and HOXD, which are located on different chromosomes and consist of 9 to 11 genes arranged in tandem. This gene, HOXC6, is one of several HOXC genes located in a cluster on chromosome 12. Three genes, HOXC5, HOXC4 and HOXC6, share a 5' non-coding exon.

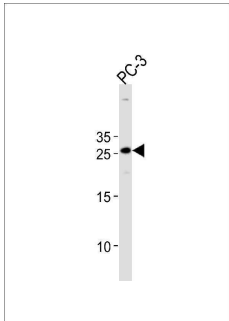
Overview

| | |
|----------------------|---|
| Product Name | Anti-HOXC6 Antibody (C-term) |
| Reactive Species | Human |
| Description | Boster Bio Anti-HOXC6 Antibody (C-term) (Catalog # A06045-1). Tested in WB, Flow Cytometry application(s). This antibody reacts with Human. |
| Application | Flow Cytometry, WB |
| Clonality | Polyclonal |
| Formulation | Purified polyclonal antibody supplied in PBS with 0.09% (W/V) sodium azide. |
| Storage Instructions | Maintain refrigerated at 2-8°C for up to 2 weeks. For long-term storage, store at -20°C in small aliquots to prevent freeze-thaw cycles. |
| Host | Rabbit |
| Uniprot ID | P09630 |

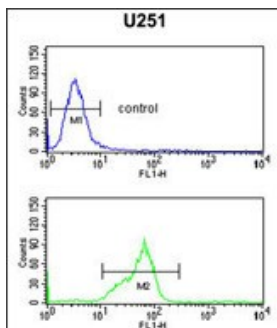
Technical Details

| | |
|----------------------------|--|
| Immunogen | This HOXC6 antibody is generated from rabbits immunized with a KLH conjugated synthetic peptide between 200-227 amino acids from the C-terminal region of human HOXC6. |
| Predicted Reactive Species | Mouse, Sheep |
| Isotype | Rabbit IgG |
| Purification | This antibody is purified through a protein A column, followed by peptide affinity purification. |
| Suggested Dilutions | WB: 1:1000 FC: 1:10-1:50 |

Anti-HOXC6 Antibody (C-term) (A06045-1) Images



HOXC6 Antibody (C-term) western blot analysis in PC-3 cell line lysates (35ug/lane). This demonstrates the HOXC6 antibody detected the HOXC6 protein (arrow).



HOXC6 Antibody (C-term) flow cytometric analysis of U251 cells (bottom histogram) compared to a negative control cell (top histogram). FITC-conjugated goat-anti-rabbit secondary antibodies were used for the analysis.

Submit a product review to [Biocompare.com](https://www.biocompare.com)

Submit a review of this product to [Biocompare.com](https://www.biocompare.com) to receive a \$20 Amazon.com giftcard! Your reviews help your fellow scientists make the right decisions. Thank you for your contribution.



Anti-HOXC6 Antibody (C-term)

For Research Use Only. Not for use in diagnostic procedures.