

## Anti-Kallikrein-11 KLK11 Antibody

Catalog Number: A06052

### About KLK11

May play a fundamental role in situations where fine interplay between intracellular calcium and cAMP determines the cellular function. May be a physiologically relevant docking site for calcineurin By similarity.

Hacker B.M., Genomics 50:97-104(1998).

Small K.M., Pharmacogenetics 13:535-541(2003).

Tantisira K.G., Hum. Mol. Genet. 14:1671-1677(2005).

### Overview

Product Name	Anti-Kallikrein-11 KLK11 Antibody
Reactive Species	Human, Mouse, Rat
Description	Boster Bio Anti-Kallikrein-11 KLK11 Antibody catalog # A06052. Tested in WB applications. This antibody reacts with Human,Mouse,Rat.
Application	WB
Clonality	Polyclonal
Formulation	Rabbit IgG, 1mg/ml in PBS with 0.02% sodium azide, 50% glycerol, pH7.2
Storage Instructions	Store at -20°C for one year. For short term storage and frequent use, store at 4°C for up to one month. Avoid repeated freeze-thaw cycles.
Host	Rabbit
Uniprot ID	Q9UBX7

### Technical Details

Immunogen	Synthesized peptide derived from human Hox-C6
Isotype	IgG
Form	Liquid
Concentration	1 mg/ml
Purification	The antibody was affinity-purified from rabbit antiserum by affinity-chromatography using epitope-specific immunogen and the purity is > 95% (by SDS-PAGE).
Suggested Dilutions	Dilute the sample so that the expected range of concentrations fall within the detection range of this kit.

If the expected range of concentration is unknown, a pilot test should be conducted to decide the optimal dilution ratio for your samples.

Some PubMed article(s) citing the expression level of this target are as follows:

Boster Bio's internal QC testing used:

WB: 1:500-1:1000

## Anti-Kallikrein-11 KLK11 Antibody (A06052) Images

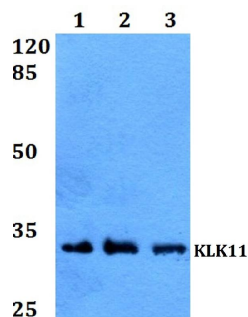


Figure 1. Western blotting validation for Anti-Kallikrein-11 KLK11 Antibody A06052

Western blot (WB) analysis of KLK11 polyclonal antibody at 1:500 dilution

Lane1:HEK293T whole cell lysate

Lane2:HepG2 whole cell lysate

Lane3:Rat brain tissue lysate

Electrophoresis was performed on a SDS-PAGE gel. To determine SDS-PAGE gel concentration

## Submit a product review to Biocompare.com

Submit a review of this product to Biocompare.com to receive a \$20 Amazon.com giftcard! Your reviews help your fellow scientists make the right decisions. Thank you for your contribution.



Anti-Kallikrein-11 KLK11 Antibody