

Anti-CRIM1 Antibody

Catalog Number: A06053

About CRIM1

CRIM1 (cysteine-rich motor neuron 1), a glycosylated type I transmembrane protein, plays a role in tissue development i.e. capillary formation and maintenance during angiogenesis. It contains an N-terminal IGF-binding protein-like motif and six von Willebrand-like cysteine-rich repeats (CRRs) in its extracellular domain. CRIM1 interacts with BMP4 and BMP7 via the CRRs and functions as an antagonist. CRIM1 is developmentally expressed in a number of tissues including the pancreas, kidney, placenta, brain and blood vessels. CRIM1 may participate in CNS and placental development by interacting with growth factors involved in motor neuron differentiation and survival.

Overview

Product Name	Anti-CRIM1 Antibody
Reactive Species	Human
Description	Boster Bio Anti-CRIM1 Antibody (Catalog # A06053). Tested in ELISA, WB, IF applications. This antibody reacts with Human.
Application	ELISA, IF, WB
Clonality	Polyclonal
Formulation	CRIM1 Antibody is supplied in PBS containing 0.02% sodium azide.
Storage Instructions	CRIM1 antibody can be stored at 4°C for three months and -20°C, stable for up to one year. Avoid repeated freeze-thaw cycles. Antibodies should not be exposed to prolonged high temperatures.
Host	Rabbit
Uniprot ID	Q9NZV1

Technical Details

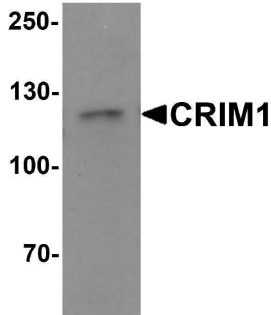
Immunogen	CRIM1 antibody was raised against a 17 amino acid synthetic peptide near the carboxy terminus of human Crim1. The immunogen is located within amino acids 910 - 960 of CRIM1.
Predicted Reactive Species	Mouse
Cross Reactivity	CRIM1 antibody is human reactive. CRIM1 antibody is predicted to not cross-react with CRIM2.
Isotype	IgG
Form	Liquid
Concentration	1 mg/mL
Purification	CRIM1 Antibody is affinity chromatography purified via peptide column.

Suggested Dilutions

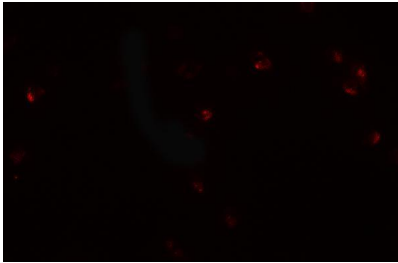
CRIM1 antibody can be used for detection of Crim1 by Western blot at 1 ug/mL. For immunofluorescence start at 20 ug/mL.

Antibody validated: Western Blot in human samples and Immunofluorescence in human samples. All other applications and species not yet tested. Optimal dilutions for each application should be determined by the researcher.

Anti-CRIM1 Antibody (A06053) Images



Western blot analysis of CRIM1 in Jurkat cell lysate with Crim1 antibody at 1 ug/mL.



Immunofluorescence of CRIM1 in Jurkat cells with CRIM1 antibody at 20 ug/mL.

1 Publications Citing This Product

1. PubMed ID: 10.1016/j.expneurol.2019.112970, Roles of Reelin/Disabled1 pathway on functional recovery of hemiplegic mice after neural cell transplantation; Reelin promotes migration toward motor cortex and maturation to motoneurons of neural grafts

Visit bosterbio.com/anti-crim1-antibody-a06053-boster.html to see all 1 publications.

Submit a product review to Biocompare.com

Submit a review of this product to Biocompare.com to receive a \$20 Amazon.com giftcard! Your reviews help your fellow scientists make the right decisions. Thank you for your contribution.



Anti-CRIM1 Antibody

For Research Use Only. Not for use in diagnostic procedures.