

Anti-ATAD3A Antibody

Catalog Number: A06057

About ATAD3A

ATAD3A is a member of the AAA ATPase family, a family of proteins that catalyze ATP into ADP and are involved in several cellular functions such as cell-cycle regulation, protein proteolysis and transport. The AAA ATPase family is characterized by a highly conserved AAA motif containing Walker homology sequences and imparting ATPase activity. Mitochondrial membrane proteins ATAD3A/B contribute to the stabilization of nucleoids and may participate in the transformation pathway and the chemosensitivity of oligodendrogliomas. The gene encoding ATAD3A/B/C maps to human chromosome 1 and has been suggested to be an anti-apoptotic marker.

Overview

Product Name	Anti-ATAD3A Antibody
Reactive Species	Human, Mouse, Rat
Description	Boster Bio Anti-ATAD3A Antibody (Catalog # A06057). Tested in ELISA, WB, ICC, IF applications. This antibody reacts with Human, Mouse, Rat.
Application	ELISA, IF, ICC, WB
Clonality	Polyclonal
Formulation	ATAD3A Antibody is supplied in PBS containing 0.02% sodium azide.
Storage Instructions	ATAD3A antibody can be stored at 4°C for three months and -20°C, stable for up to one year. Avoid repeated freeze-thaw cycles. Antibodies should not be exposed to prolonged high temperatures.
Host	Rabbit
Uniprot ID	Q9NVI7

Technical Details

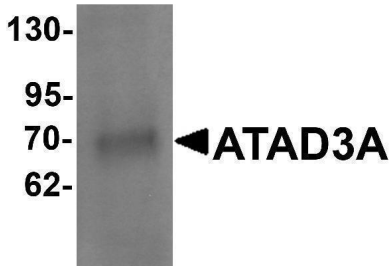
Immunogen	ATAD3A antibody was raised against a 19 amino acid synthetic peptide near the amino terminus of human ATAD3A. The immunogen is located within amino acids 110 - 160 of ATAD3A.
Predicted Reactive Species	Bovine, Chicken, Pig, Rat
Cross Reactivity	ATAD3A antibody is predicted to not cross-react with other ATAD protein family members. At least two isoforms are known to exist.
Isotype	IgG
Form	Liquid
Concentration	1 mg/mL
Purification	ATAD3A Antibody is affinity chromatography purified via peptide column.

Suggested Dilutions

ATAD3A antibody can be used for detection of ATAD3A by Western blot at 1 ug/mL. Antibody can also be used for immunocytochemistry starting at 20 ug/mL. For immunofluorescence start at 20 ug/mL.

Antibody validated: Western Blot in human samples; Immunocytochemistry in human samples and Immunofluorescence in human samples. All other applications and species not yet tested. Optimal dilutions for each application should be determined by the researcher.

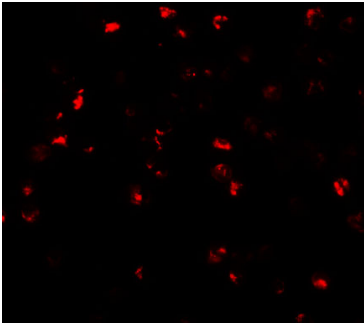
Anti-ATAD3A Antibody (A06057) Images



Western blot analysis of ATAD3A in Daudi cell lysate with ATAD3A antibody at 1 ug/mL .



Immunocytochemistry of ATAD3A in Daudi cells with ATAD3A antibody at 20 ug/mL.



Immunofluorescence of ATAD3A in Daudi cells with ATAD3A antibody at 20 ug/mL.

Submit a product review to [Biocompare.com](https://www.biocompare.com)

Submit a review of this product to [Biocompare.com](https://www.biocompare.com) to receive a \$20 Amazon.com giftcard! Your reviews help your fellow scientists make the right decisions. Thank you for your contribution.



Anti-ATAD3A Antibody

For Research Use Only. Not for use in diagnostic procedures.