

Anti-POLR3A Antibody

Catalog Number: A06059

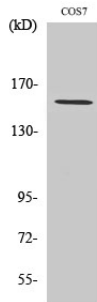
Overview

Product Name	Anti-POLR3A Antibody
Reactive Species	Human, Monkey, Mouse
Description	Boster Bio Anti-POLR3A Antibody catalog # A06059. Tested in WB, IHC, IF, ELISA applications. This antibody reacts with Human, Mouse, Monkey.
Application	ELISA, IF, IHC, WB
Clonality	Polyclonal
Formulation	Liquid in PBS containing 50% glycerol, 0.5% stabilizing protein and 0.02% sodium azide. *This antibody is supplied in a stabilized formulation. Compatibility with conjugation reactions depends on the chemistry of the conjugation method used. For conjugation methods that are not compatible with the stabilizing components present in this formulation, a carrier-free antibody format is required.
Storage Instructions	Store at -20°C for one year. For short term storage and frequent use, store at 4°C for up to one month. Avoid repeated freeze-thaw cycles.
Host	Rabbit
Uniprot ID	O14802

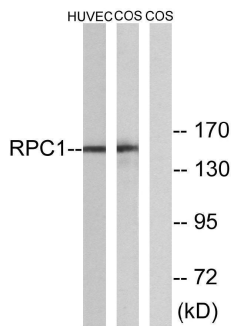
Technical Details

Immunogen	The antiserum was produced against synthesized peptide derived from human RPC1. AA range:31-80
Isotype	IgG
Form	Liquid
Concentration	1 mg/ml
Purification	Immunogen affinity purified
Suggested Dilutions	WB 1:500-1:2000 IHC 1:100-1:300 ELISA 1:40000 IF 1:50-200

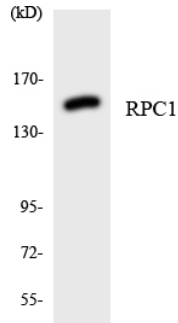
Anti-POLR3A Antibody (A06059) Images



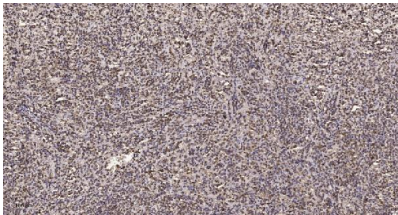
Western Blot analysis of various cells using POLR3A Polyclonal Antibody cells nucleus extracted by Minute TM Cytoplasmic and Nuclear Fractionation kit .



Western blot analysis of lysates from COS and HUVEC cells, using RPC1 Antibody. The lane on the right is blocked with the synthesized peptide.



Western blot analysis of the lysates from 293 cells using RPC1 antibody.



Immunohistochemical analysis of paraffin-embedded human spleen. 1, Tris-EDTA, pH9.0 was used for antigen retrieval. 2 Antibody was diluted at 1:200 (4° overnight).3, Secondary antibody was diluted at 1:200 (room temperature, 45min).

Submit a product review to [Biocompare.com](https://www.biocompare.com)

Submit a review of this product to [Biocompare.com](https://www.biocompare.com) to receive a \$20 Amazon.com giftcard! Your reviews help your fellow scientists make the right decisions. Thank you for your contribution.



Anti-POLR3A Antibody

For Research Use Only. Not for use in diagnostic procedures.