

Anti-RBP2 Antibody Picoband®

Catalog Number: A06064-1

About RBP2

RBP2(Retinol-binding protein 2) is a protein that in humans is encoded by the RBP2 gene. RBP2 is an abundant protein present in the small intestinal epithelium. It is thought to participate in the uptake and/or intracellular metabolism of vitamin A. Vitamin A is a fat-soluble vitamin necessary for growth, reproduction, differentiation of epithelial tissues, and vision. RBP2 may also modulate the supply of retinoic acid to the nuclei of endometrial cells during the menstrual cycle.

Overview

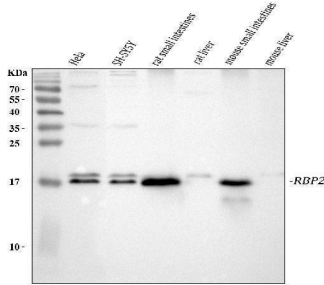
Product Name	Anti-RBP2 Antibody Picoband®
Reactive Species	Human, Mouse, Rat
Description	Boster Bio Anti-RBP2 Antibody Picoband® catalog # A06064-1. Tested in ELISA, WB applications. This antibody reacts with Human, Mouse, Rat. The brand Picoband indicates this is a premium antibody that guarantees superior quality, high affinity, and strong signals with minimal background in Western blot applications. Only our best-performing antibodies are designated as Picoband, ensuring unmatched performance.
Application	ELISA, WB
Clonality	Polyclonal
Formulation	Each vial contains 4 mg Trehalose, 0.9 mg NaCl, 0.2 mg Na ₂ HPO ₄ .
Storage Instructions	At -20°C for one year from date of receipt. After reconstitution, at 4°C for one month. It can also be aliquotted and stored frozen at -20°C for six months. Avoid repeated freezing and thawing.
Host	Rabbit
Uniprot ID	P50120

Technical Details

Immunogen	E.coli-derived human RBP2 recombinant protein (Position: E10-K99).
Recommended Detection Systems	Boster recommends Enhanced Chemiluminescent Kit with anti-Rabbit IgG (EK1002) for Western blot.
Cross Reactivity	No cross-reactivity with other proteins.
Isotype	Rabbit IgG
Form	Lyophilized
Concentration	Adding 0.2 ml of distilled water will yield a concentration of 500 µg/ml.

Purification	Immunogen affinity purified.
Suggested Dilutions	Western blot, 0.25-0.5 ug/ml, Human, Mouse, Rat ELISA, 0.1-0.5 ug/ml, -

Anti-RBP2 Antibody Picoband® (A06064-1) Images



Western blot analysis of RBP2 using anti-RBP2 antibody (A06064-1). Electrophoresis was performed on a 5-20% SDS-PAGE gel at 70V (Stacking gel) / 90V (Resolving gel) for 2-3 hours. The sample well of each lane was loaded with 30 ug of sample under reducing conditions. Lane 1: human HeLa whole cell lysates, Lane 2: human SH-SY5Y whole cell lysates, Lane 3: rat small intestines tissue lysates, Lane 4: rat liver tissue lysates, Lane 5: mouse small intestines tissue lysates, Lane 6: mouse liver tissue lysates. After electrophoresis, proteins were transferred to a nitrocellulose membrane at 150 mA for 50-90 minutes. Blocked the membrane with 5% non-fat milk/TBS for 1.5 hour at RT. The membrane was incubated with rabbit anti-RBP2 antigen affinity purified polyclonal antibody (Catalog # A06064-1) at 0.5 ug/mL overnight at 4°C, then washed with TBS-0.1%Tween 3 times with 5 minutes each and probed with a goat anti-rabbit IgG-HRP secondary antibody at a dilution of 1:5000 for 1.5 hour at RT. The signal is developed using an Enhanced Chemiluminescent detection (ECL) kit (Catalog # EK1002) with Tanon 5200 system. A specific band was detected for RBP2 at approximately 16 kDa. The expected band size for RBP2 is at 16 kDa.

Submit a product review to [Biocompare.com](https://www.biocompare.com)

Submit a review of this product to [Biocompare.com](https://www.biocompare.com) to receive a \$20 Amazon.com giftcard! Your reviews help your fellow scientists make the right decisions. Thank you for your contribution.



Anti-RBP2 Antibody

For Research Use Only. Not for use in diagnostic procedures.