

Anti-CKIP1 PLEKHO1 Antibody

Catalog Number: A06065

About PLEKHO1

CKIP1 was identified through a yeast-two hybrid screening as a protein that would interact with only one of the two catalytic subunits of the casein kinase 2 complex. CKIP1 is a pleckstrin homology domain-containing protein localized within the nucleus and at the plasma membrane that interacts with CK2alpha but not CK2alpha', and is thought to play a role in targeting CK2alpha to a particular cellular location. CKIP1 has been implicated in muscle differentiation and the regulation of cell morphology and actin cytoskeleton. CKIP1 can also interact with other proteins such as ATM, an upstream kinase of p53, and recruit the nuclear ATM to the plasma membrane, suggesting CKIP1 may regulate ATM function through re-localizing ATM. CKIP1 can also form a complex with the kinase AKT, leading to a down-regulation of PI3K/AKT signaling and suppression of tumor growth in vivo.

Overview

Product Name	Anti-CKIP1 PLEKHO1 Antibody
Reactive Species	Human, Mouse, Rat
Description	Boster Bio Anti-CKIP1 PLEKHO1 Antibody (Catalog # A06065). Tested in ELISA, WB applications. This antibody reacts with Human, Mouse, Rat.
Application	ELISA, WB
Clonality	Polyclonal
Formulation	CKIP1 Antibody is supplied in PBS containing 0.02% sodium azide.
Storage Instructions	CKIP1 antibody can be stored at 4°C for three months and -20°C, stable for up to one year. Avoid repeated freeze-thaw cycles. Antibodies should not be exposed to prolonged high temperatures.
Host	Rabbit
Uniprot ID	Q53GL0

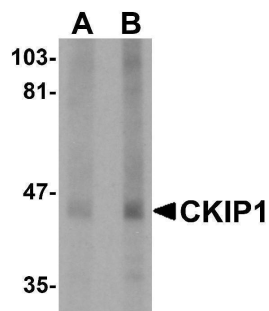
Technical Details

Immunogen	CKIP1 antibody was raised against an 18 amino acid synthetic peptide from near the carboxy terminus of human CKIP1. The immunogen is located within the last 50 amino acids of CKIP1.
Predicted Reactive Species	Bovine
Isotype	IgG
Form	Liquid
Concentration	1 mg/mL
Purification	CKIP1 Antibody is affinity chromatography purified via peptide column.

Suggested Dilutions

CKIP1 antibody can be used for detection of CKIP1 by Western blot at 1 - 2 ug/mL.
Antibody validated: Western Blot in human samples. All other applications and species not yet tested. Optimal dilutions for each application should be determined by the researcher.

Anti-CKIP1 PLEKHO1 Antibody (A06065) Images



Western blot analysis of CKIP1 in human lung tissue lysate with CKIP1 antibody at (A) 1 and (B) 2 ug/mL.

Submit a product review to Biocompare.com

Submit a review of this product to Biocompare.com to receive a \$20 Amazon.com giftcard! Your reviews help your fellow scientists make the right decisions. Thank you for your contribution.



Anti-CKIP1 PLEKHO1 Antibody

For Research Use Only. Not for use in diagnostic procedures.