

## Anti-RBM35A ESRP1 Antibody

Catalog Number: A06068

### About ESRP1

RBM35A, also known as ESRP1, is a mRNA splicing factor that with its related protein RBM35B (ESRP2) are coordinators of an epithelial cell-type-specific splicing program. RBM35A contains three putative RNA recognition motifs and acts by directly binding specific sequences in mRNAs. RBM35A is involved in posttranscriptional regulation of a number of genes such as FGFR2, CD44, CTNND1, and ENAH by exerting a differential effect on protein translation via 5' UTRs of mRNAs. Other recent studies have shown that RMB35A may also act as a novel tumor suppressor.

### Overview

Product Name	Anti-RBM35A ESRP1 Antibody
Reactive Species	Human, Mouse, Rat
Description	Boster Bio Anti-RBM35A ESRP1 Antibody (Catalog # A06068). Tested in ELISA, WB, IHC-P, IF applications. This antibody reacts with Human, Mouse, Rat.
Application	ELISA, IF, IHC-P, WB
Clonality	Polyclonal
Formulation	RBM35A Antibody is supplied in PBS containing 0.02% sodium azide.
Storage Instructions	RBM35A antibody can be stored at 4°C for three months and -20°C, stable for up to one year. Avoid repeated freeze-thaw cycles. Antibodies should not be exposed to prolonged high temperatures.
Host	Rabbit
Uniprot ID	Q6NXG1

### Technical Details

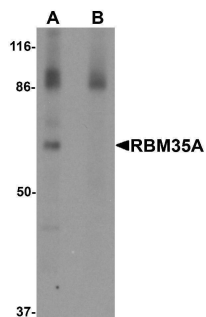
Immunogen	RBM35A antibody was raised against a 18 amino acid synthetic peptide near the amino terminus of human RBM35A. The immunogen is located within amino acids 30 - 80 of RBM35A.
Predicted Reactive Species	Bovine
Cross Reactivity	RBM35A antibody is predicted to not cross-react with other RBM35/ESRP family members. At least five isoforms of RBM35A are known to exist; this antibody will detect all five.
Isotype	IgG
Form	Liquid
Concentration	1 mg/mL
Purification	RBM35A Antibody is affinity chromatography purified via peptide column.

Suggested Dilutions

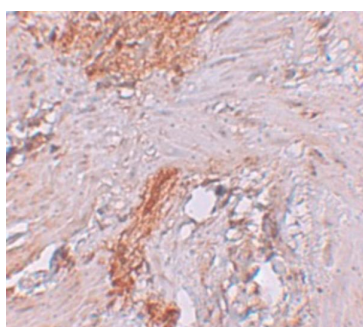
RBM35A antibody can be used for detection of RBM35A by Western blot at 0.5 ug/mL. Antibody can also be used for immunohistochemistry starting at 2.5 ug/mL. For immunofluorescence start at 20 ug/mL.

Antibody validated: Western Blot in rat samples; Immunohistochemistry in human samples and Immunofluorescence in human samples. All other applications and species not yet tested. Optimal dilutions for each application should be determined by the researcher.

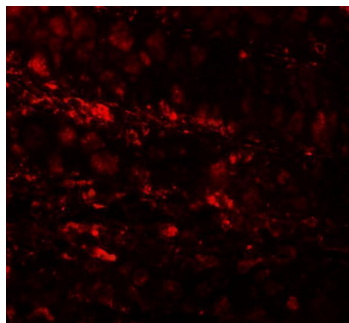
## Anti-RBM35A ESRP1 Antibody (A06068) Images



Western blot analysis of RBM35A in rat colon tissue lysate with RBM35A antibody at 0.5 ug/mL in (A) the absence and (B) the presence of blocking peptide.



Immunohistochemistry of RBM35A in human colon tissue with RBM35A antibody at 2.5 ug/mL.



Immunofluorescence of RBM35A in human colon tissue cells with RBM35A antibody at 20 ug/mL.

### Submit a product review to [Biocompare.com](https://www.biocompare.com)

Submit a review of this product to [Biocompare.com](https://www.biocompare.com) to receive a \$20 Amazon.com giftcard! Your reviews help your fellow scientists make the right decisions. Thank you for your contribution.



Anti-RBM35A ESRP1 Antibody

For Research Use Only. Not for use in diagnostic procedures.