

Anti-Melanophilin/MLPH Antibody

Catalog Number: A06081-2

About MLPH

This gene encodes a member of the exophilin subfamily of Rab effector proteins. The protein forms a ternary complex with the small Ras-related GTPase Rab27A in its GTP-bound form and the motor protein myosin Va. A similar protein complex in mouse functions to tether pigment-producing organelles called melanosomes to the actin cytoskeleton in melanocytes, and is required for visible pigmentation in the hair and skin. A mutation in this gene results in Griscelli syndrome type 3, which is characterized by a silver-gray hair color and abnormal pigment distribution in the hair shaft. Several alternatively spliced transcript variants encoding different isoforms have been found for this gene.

Overview

Product Name	Anti-Melanophilin/MLPH Antibody
Reactive Species	Human
Description	Boster Bio Anti-Melanophilin/MLPH Antibody catalog # A06081-2. Tested in WB, IHC, ICC, IF, IP, ELISA applications. This antibody reacts with Human.
Application	ELISA, IP, IF, IHC, ICC, WB
Clonality	Polyclonal
Formulation	500 ug/ml antibody with PBS, 0.02% NaN ₃ , 1 mg stabilizing protein and 50% glycerol *This antibody is supplied in a stabilized formulation. Compatibility with conjugation reactions depends on the chemistry of the conjugation method used. For conjugation methods that are not compatible with the stabilizing components present in this formulation, a carrier-free antibody format is required.
Storage Instructions	12 months from date of receipt -20°C as supplied. 6 months 2 to 8°C after reconstitution. Avoid repeated freezing and thawing.
Host	Rabbit
Uniprot ID	Q9BV36

Technical Details

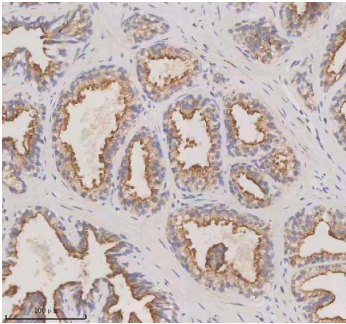
Immunogen	E.coli-derived human MLPH recombinant protein (Position: T11-A237).
Form	Liquid
Concentration	500 ug/ml
Purification	Immunogen affinity purified.
Suggested Dilutions	Western blot, 1:500-2000 Immunohistochemistry, 1:50-400 Immunocytochemistry/Immunofluorescence, 1:50-400

	Immunoprecipitation, 1:50 ELISA, 1:100-1000
--	------------------------------------------------

Anti-Melanophilin/MLPH Antibody (A06081-2) Images



IHC analysis of Melanophilin/MLPH using anti-Melanophilin/MLPH antibody (A06081-2). Melanophilin/MLPH was detected in a paraffin-embedded section of human prostate cancer tissue. Heat mediated antigen retrieval was performed in EDTA buffer (pH 8.0, epitope retrieval solution). The tissue section was blocked with 10% goat serum. The tissue section was then incubated with 1:100 rabbit anti-Melanophilin/MLPH Antibody (A06081-2) overnight at 4°C. Peroxidase Conjugated Goat Anti-rabbit IgG was used as secondary antibody and incubated for 30 minutes at 37°C. The tissue section was developed using HRP Conjugated Rabbit IgG Super Vision Assay Kit (Catalog # SV0002) with DAB as the chromogen.



IHC analysis of Melanophilin/MLPH using anti-Melanophilin/MLPH antibody (A06081-2). Melanophilin/MLPH was detected in a paraffin-embedded section of human prostate cancer tissue. Heat mediated antigen retrieval was performed in EDTA buffer (pH 8.0, epitope retrieval solution). The tissue section was blocked with 10% goat serum. The tissue section was then incubated with 1:100 rabbit anti-Melanophilin/MLPH Antibody (A06081-2) overnight at 4°C. Peroxidase Conjugated Goat Anti-rabbit IgG was used as secondary antibody and incubated for 30 minutes at 37°C. The tissue section was developed using HRP Conjugated Rabbit IgG Super Vision Assay Kit (Catalog # SV0002) with DAB as the chromogen.

Submit a product review to Biocompare.com

Submit a review of this product to Biocompare.com to receive a \$20 Amazon.com giftcard! Your reviews help your fellow scientists make the right decisions. Thank you for your contribution.



Anti-Melanophilin/MLPH Antibody

For Research Use Only. Not for use in diagnostic procedures.