

## Anti-GFR alpha 2 GFRA2 Antibody

Catalog Number: A06103

### About GFRA2

Members of the glial cell line-derived neurotrophic factor (GDNF) family, including GDNF and neurturin (NTN) play key roles in the control of vertebrate neuron survival and differentiation. Physiological responses to NTN require the presence of a novel glycosylphosphatidylinositol linked protein NTN $\alpha$ , which is a cell surface receptor for NTN. The cDNAs encoding NTN $\alpha$  from human, rat, chicken, and mouse have been cloned recently. NTN $\alpha$  was also termed GDNF $\beta$ , Ret ligand 2 (RETL2) or TGF $\beta$ -related neurotrophic factor receptor 2 (TrnR2) and nominated as GFR $\alpha$ -2 recently. GFR $\alpha$ -2 binds NTN and mediates activation of RET receptor tyrosine kinase by both NTN and GDNF. Thus, NTN, GFR $\alpha$ -2, and the Ret PTK form a complex to transduce NTN signal and to mediate NTN function.

### Overview

Product Name	Anti-GFR alpha 2 GFRA2 Antibody
Reactive Species	Human, Mouse, Rat
Description	Boster Bio Anti-GFR alpha 2 GFRA2 Antibody (Catalog # A06103). Tested in ELISA, WB, ICC applications. This antibody reacts with Human, Mouse, Rat.
Application	ELISA, ICC, WB
Clonality	Polyclonal
Formulation	GFR alpha 2 Antibody is supplied in PBS containing 0.02% sodium azide.
Storage Instructions	GFR alpha 2 antibody can be stored at 4°C for three months and -20°C, stable for up to one year. Avoid repeated freeze-thaw cycles. Antibodies should not be exposed to prolonged high temperatures.
Host	Rabbit
Uniprot ID	O00451

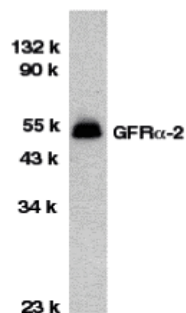
### Technical Details

Immunogen	GFR alpha 2 antibody was raised against a 15 amino acid peptide near the center of human GFR alpha 2. The immunogen is located within amino acids 360 - 410 of GFR alpha 2.
Predicted Reactive Species	Bovine
Isotype	IgG
Form	Liquid
Concentration	1 mg/ml
Purification	GFR alpha 2 Antibody is Ion exchange chromatography purified.

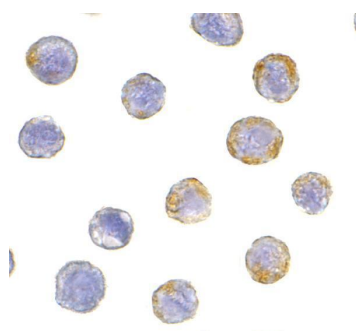
Suggested Dilutions

GFR alpha 2 antibody can be used for detection of GFR alpha 2 by Western blot at 1 ug/mL. A 52 kDa band should be detected. Antibody can also be used for immunocytochemistry starting at 5 ug/mL. Antibody validated: Western Blot in human samples and Immunocytochemistry in human samples. All other applications and species not yet tested. Optimal dilutions for each application should be determined by the researcher.

## Anti-GFR alpha 2 GFRA2 Antibody (A06103) Images



Western blot analysis of GFR alpha 2 in HeLa total cell lysate with GFR alpha 2 antibody at 1 ug/mL.



Immunocytochemistry of GFR alpha 2 in HeLa cells with GFR alpha 2 antibody at 5 ug/mL.

### Submit a product review to [Biocompare.com](https://www.biocompare.com)

Submit a review of this product to [Biocompare.com](https://www.biocompare.com) to receive a \$20 Amazon.com giftcard! Your reviews help your fellow scientists make the right decisions. Thank you for your contribution.



Anti-GFR alpha 2 GFRA2 Antibody

For Research Use Only. Not for use in diagnostic procedures.