

Anti-Importin subunit alpha-4 KPNA3 Antibody

Catalog Number: A06131

About KPNA3

Karyopherin, a cytosolic and heterodimeric protein complex consisting of alpha and beta subunits, is responsible for targeting proteins with nuclear localization signals to the nuclear pore complex by an energy requiring, Ran-dependent mechanism. The alpha subunit and imported substrate enter the nucleus and accumulate in the nucleoplasm, while the beta subunit accumulates at the NPC. KPNA3, the alpha subunit 3 of karyopherin, is similar to human KPNA2, suggesting that KPNA3 may be involved in the nuclear transport system. It is ubiquitously expressed and recent studies have shown that human KPNA3 may be associated with schizophrenia.

Overview

Product Name	Anti-Importin subunit alpha-4 KPNA3 Antibody
Reactive Species	Human, Mouse, Rat
Description	Boster Bio Anti-Importin subunit alpha-4 KPNA3 Antibody (Catalog # A06131). Tested in ELISA, WB, ICC, IF applications. This antibody reacts with Human, Mouse, Rat.
Application	ELISA, IF, ICC, WB
Clonality	Polyclonal
Formulation	KPNA3 Antibody is supplied in PBS containing 0.02% sodium azide.
Storage Instructions	KPNA3 antibody can be stored at 4°C for three months and -20°C, stable for up to one year. Avoid repeated freeze-thaw cycles. Antibodies should not be exposed to prolonged high temperatures.
Host	Rabbit
Uniprot ID	O00505

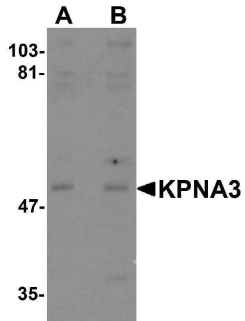
Technical Details

Immunogen	KPNA3 antibody was raised against a 14 amino acid synthetic peptide near the carboxy end of human KPNA3. The immunogen is located within the last 50 amino acids of KPNA3.
Predicted Reactive Species	Mouse, Rat
Isotype	IgG
Form	Liquid
Concentration	1 mg/mL
Purification	KPNA3 Antibody is affinity chromatography purified via peptide column.
Suggested Dilutions	KPNA3 antibody can be used for detection of KPNA3 by Western blot at 1 - 2 ug/mL. Antibody can also be used for immunocytochemistry starting at 10 ug/mL. For immunofluorescence start at 20

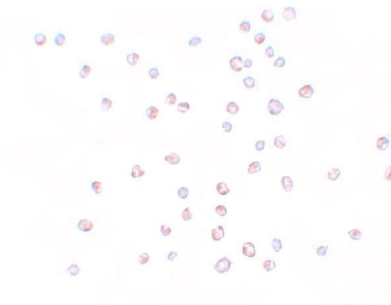
ug/mL.

Antibody validated: Western Blot in mouse samples; Immunocytochemistry in human samples and Immunofluorescence in mouse samples. All other applications and species not yet tested. Optimal dilutions for each application should be determined by the researcher.

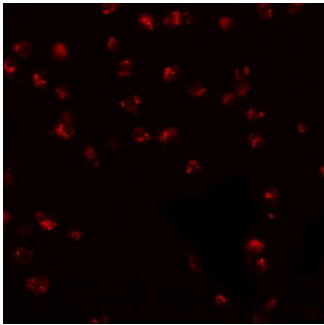
Anti-Importin subunit alpha-4 KPNA3 Antibody (A06131) Images



Western blot analysis of KPNA3 in EL4 cell lysate with KPNA3 antibody at (A) 1 and (B) 2 ug/mL.



Immunocytochemistry of KPNA3 in HeLa cells with KPNA3 antibody at 10 ug/mL.



Immunofluorescence of KPNA3 in EL4 cells with KPNA3 antibody at 20 ug/mL.

Submit a product review to Biocompare.com

Submit a review of this product to Biocompare.com to receive a \$20 Amazon.com giftcard! Your reviews help your fellow scientists make the right decisions. Thank you for your contribution.



Anti-Importin subunit alpha-4 KPNA3 Antibody

For Research Use Only. Not for use in diagnostic procedures.