

## Anti-Misshapen-like kinase 1 MINK1 Antibody

Catalog Number: A06134-2

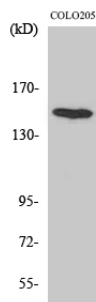
### Overview

|                      |  |
|----------------------|--|
| Product Name         | Anti-Misshapen-like kinase 1 MINK1 Antibody  |
| Reactive Species     | Human, Mouse   |
| Description          | Boster Bio Anti-Misshapen-like kinase 1 MINK1 Antibody catalog # A06134-2. Tested in ELISA, IHC, WB applications. This antibody reacts with Human, Mouse.  |
| Application          | ELISA, IF, IHC, WB   |
| Clonality            | Polyclonal   |
| Formulation          | Liquid in PBS containing 50% glycerol, 0.5% stabilizing protein and 0.02% sodium azide.<br>*This antibody is supplied in a stabilized formulation.<br>Compatibility with conjugation reactions depends on the chemistry of the conjugation method used. For conjugation methods that are not compatible with the stabilizing components present in this formulation, a carrier-free antibody format is required. |
| Storage Instructions | Store at -20°C for one year. For short term storage and frequent use, store at 4°C for up to one month. Avoid repeated freeze-thaw cycles.   |
| Host                 | Rabbit   |
| Uniprot ID           | Q8N4C8   |

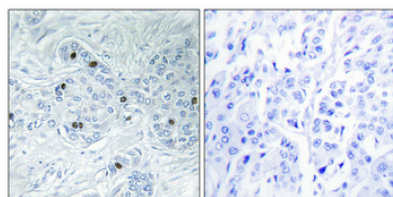
### Technical Details

|                     |   |
|---------------------|---|
| Immunogen           | The antiserum was produced against synthesized peptide derived from human MAP4K6. AA range:401-450                    |
| Isotype             | IgG   |
| Form                | Liquid  |
| Concentration       | 1 mg/ml   |
| Purification        | The antibody was affinity-purified from rabbit antiserum by affinity-chromatography using epitope-specific immunogen. |
| Suggested Dilutions | WB 1:500-1:2000<br>IHC 1:100-1:300<br>ELISA 1:20000<br>IF 1:50-200  |

## Anti-Misshapen-like kinase 1 MINK1 Antibody (A06134-2) Images



Western blotting validation for Anti-Misshapen-like kinase 1 MINK1 Antibody A06134-2 Western Blot (WB) analysis of specific cells using MINK1 polyclonal antibody. Electrophoresis was performed on a SDS-PAGE gel. To determine SDS-PAGE gel concentration



Immunohistochemistry validation of MINK1 using Anti-Misshapen-like kinase 1 MINK1 Antibody (A06134-2). Immunohistochemical analysis of paraffin-embedded Human breast cancer. Antibody was diluted at 1:100 (4°C

### Submit a product review to Biocompare.com

Submit a review of this product to Biocompare.com to receive a \$20 Amazon.com giftcard! Your reviews help your fellow scientists make the right decisions. Thank you for your contribution.



Anti-Misshapen-like kinase 1 MINK1 Antibody

For Research Use Only. Not for use in diagnostic procedures.