

Anti-MSRB2 Antibody Picoband®

Catalog Number: A06136-1

About MSRB2

Predicted to enable actin binding activity; peptide-methionine (R)-S-oxide reductase activity; and zinc ion binding activity. Predicted to be involved in actin filament polymerization and protein repair. Located in mitochondrion.

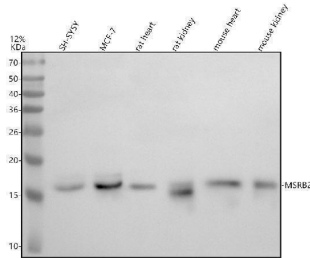
Overview

Product Name	Anti-MSRB2 Antibody Picoband®
Reactive Species	Human, Mouse, Rat
Description	Boster Bio Anti-MSRB2 Antibody Picoband® catalog # A06136-1. Tested in WB applications. This antibody reacts with Human, Mouse, Rat. The brand Picoband indicates this is a premium antibody that guarantees superior quality, high affinity, and strong signals with minimal background in Western blot applications. Only our best-performing antibodies are designated as Picoband, ensuring unmatched performance.
Application	WB
Clonality	Polyclonal
Formulation	Each vial contains 4 mg Trehalose, 0.9 mg NaCl, 0.2 mg Na ₂ HPO ₄ .
Storage Instructions	At -20°C for one year from date of receipt. After reconstitution, at 4°C for one month. It can also be aliquotted and stored frozen at -20°C for six months. Avoid repeated freezing and thawing.
Host	Rabbit
Uniprot ID	Q9Y3D2

Technical Details

Immunogen	A synthetic peptide corresponding to a sequence in the middle region of human MSRB2.
Form	Lyophilized
Concentration	Adding 0.2 ml of distilled water will yield a concentration of 500 ug/ml.
Purification	Immunogen affinity purified.
Suggested Dilutions	Western blot, 0.25-0.5 ug/ml, Human, Mouse, Rat Immunohistochemistry(Paraffin-embedded Section), 2-5 ug/ml, Human ELISA, 0.1-0.5 ug/ml

Anti-MSRB2 Antibody Picoband® (A06136-1) Images



Western blot analysis of MSRB2 using anti-MSRB2 antibody (A06136-1). Electrophoresis was performed on a 12% SDS-PAGE gel at 80V (Stacking gel) / 120V (Resolving gel) for 2 hours. The sample well of each lane was loaded with 30 ug of sample under reducing conditions. Lane 1: human SH-SY5Y whole cell lysates, Lane 2: human MCF-7 whole cell lysates, Lane 3: rat heart tissue lysates, Lane 4: rat kidney tissue lysates, Lane 5: mouse heart tissue lysates, Lane 6: mouse kidney tissue lysates. After electrophoresis, proteins were transferred to a nitrocellulose membrane at 150 mA for 50-90 minutes. Blocked the membrane with 5% non-fat milk/TBS for 1.5 hour at RT. The membrane was incubated with rabbit anti-MSRB2 antigen affinity purified polyclonal antibody (A06136-1) at 0.5 ug/mL overnight at 4°C, then washed with TBS-0.1%Tween 3 times with 5 minutes each and probed with a goat anti-rabbit IgG-HRP secondary antibody at a dilution of 1:5000 for 1.5 hour at RT. The signal is developed using an ECL Plus Western Blotting Substrate (Catalog # AR1196-200) with Tanon 5200 system. A specific band was detected for MSRB2 at approximately 15 kDa. The expected band size for MSRB2 is at 20 kDa.

Submit a product review to [Biocompare.com](https://www.biocompare.com)

Submit a review of this product to [Biocompare.com](https://www.biocompare.com) to receive a \$20 Amazon.com giftcard! Your reviews help your fellow scientists make the right decisions. Thank you for your contribution.



Anti-MSRB2 Antibody

For Research Use Only. Not for use in diagnostic procedures.