

Anti-Bcl-rambo BCL2L13 Antibody

Catalog Number: A06151

About BCL2L13

Apoptosis plays a major role in normal organism development, tissue homeostasis, and removal of damaged cells. Disruption of this process has been implicated in a variety of diseases such as cancer. Members of the Bcl-2 family are known to be critical regulators of this process. These proteins are characterized by the presence of several conserved motifs termed Bcl-2 homology (BH) domains. A novel, widely expressed member termed Bcl-rambo was recently identified. This protein is localized to mitochondria in mammalian cells and its overexpression induces apoptosis which could be blocked by co-expression of inhibitor of apoptosis proteins (IAPs) such as XIAP, cIAP1, and cIAP2. Bcl-rambo shows overall homology to the anti-apoptotic members containing BH motifs, but unlike Bcl-2, the C-terminal membrane anchor of Bcl-rambo is preceded by a unique 250 amino acid insertion. This region by itself can induce apoptosis more efficiently than the Bcl-2 homology regions, suggesting that Bcl-rambo may be important other pro-apoptotic pathways.

Overview

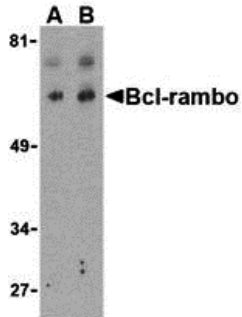
Product Name	Anti-Bcl-rambo BCL2L13 Antibody
Reactive Species	Human, Mouse, Rat
Description	Boster Bio Anti-Bcl-rambo BCL2L13 Antibody (Catalog # A06151). Tested in ELISA, WB, IHC-P, IF applications. This antibody reacts with Human, Mouse, Rat.
Application	ELISA, IF, IHC-P, WB
Clonality	Polyclonal
Formulation	Bcl-rambo Antibody is supplied in PBS containing 0.02% sodium azide.
Storage Instructions	Bcl-rambo antibody can be stored at 4°C for three months and -20°C, stable for up to one year. Avoid repeated freeze-thaw cycles. Antibodies should not be exposed to prolonged high temperatures.
Host	Rabbit
Uniprot ID	Q9BXK5

Technical Details

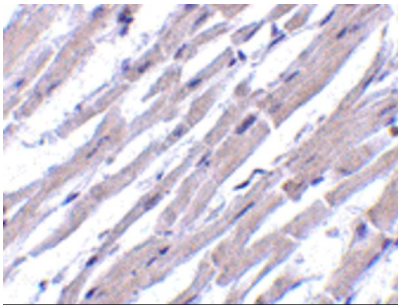
Immunogen	Bcl-rambo antibody was raised against a 15 amino acid synthetic peptide from near the center of human Bcl-rambo. The immunogen is located within amino acids 280 - 330 of Bcl-rambo.
Predicted Reactive Species	Chicken
Cross Reactivity	TNFAIP1 antibody is human, mouse and rat reactive. TNFAIP1 antibody is predicted to not cross-react with other TNFAIP proteins.
Isotype	IgG

Form	Liquid
Concentration	1 mg/mL
Purification	Bcl-rambo Antibody is affinity chromatography purified via peptide column.
Suggested Dilutions	<p>Bcl-rambo antibody can be used for the detection of Bcl-rambo by Western blot at 2 and 4 ug/mL. Antibody can also be used for immunohistochemistry starting at 10 ug/mL. For immunofluorescence start at 20 ug/mL.</p> <p>Antibody validated: Western Blot in human samples; Immunohistochemistry in human samples and Immunofluorescence in human samples. All other applications and species not yet tested. Optimal dilutions for each application should be determined by the researcher.</p>

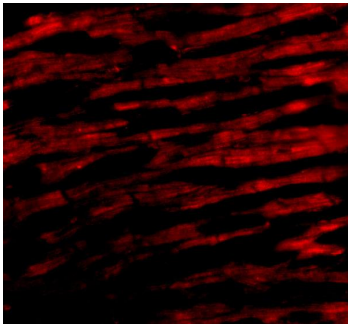
Anti-Bcl-rambo BCL2L13 Antibody (A06151) Images



Western blot analysis of Bcl-rambo in K562 cell lysate with Bcl-rambo antibody at (A) 2 and (B) 4 ug/mL.



Immunohistochemistry of Bcl-rambo in human heart tissue with Bcl-rambo antibody at 10 ug/mL.



Immunofluorescence of Bcl-rambo in Human Heart cells with Bcl-rambo antibody at 20 ug/mL.

Submit a product review to [Biocompare.com](https://www.biocompare.com)

Submit a review of this product to [Biocompare.com](https://www.biocompare.com) to receive a \$20 Amazon.com giftcard! Your reviews help your fellow scientists make the right decisions. Thank you for your contribution.



Anti-Bcl-rambo BCL2L13 Antibody