

Anti-mGluR-6 (A865) GRM6 Antibody

Catalog Number: A06163-2

About GRM6

G-protein coupled receptor for glutamate. Ligand binding causes a conformation change that triggers signaling via guanine nucleotide-binding proteins (G proteins) and modulates the activity of down-stream effectors, such as adenylate cyclase. Signaling inhibits adenylate cyclase activity. By similarity. Signaling stimulates TRPM1 channel activity and Ca²⁺ uptake. Required for normal vision.

Inga Everts, J. Neurosci., Feb 1999; 19: 916.

Gregory D. Salinas, J. Biol. Chem., Dec 2006; 281: 40164 - 40173.

Sheng Yan, J. Neurosci., Jan 2004; 24: 679.

Xiao-Mei Liu, J. Biol. Chem., Jun 2006; 281: 17432 - 17445.

Overview

Product Name	Anti-mGluR-6 (A865) GRM6 Antibody
Reactive Species	Human, Mouse, Rat
Description	Boster Bio Anti-mGluR-6 (A865) GRM6 Antibody catalog # A06163-2. Tested in WB,IHC applications. This antibody reacts with Human,Mouse,Rat.
Application	IHC, WB
Clonality	Polyclonal
Formulation	Rabbit IgG, 1mg/ml in PBS with 0.02% sodium azide, 50% glycerol, pH7.2
Storage Instructions	Store at -20°C for one year. For short term storage and frequent use, store at 4°C for up to one month. Avoid repeated freeze-thaw cycles.
Host	Rabbit
Uniprot ID	O15303

Technical Details

Immunogen	Synthesized peptide derived from human GluR6.
Isotype	IgG
Form	Liquid
Concentration	1 mg/ml
Purification	The antibody was affinity-purified from rabbit antiserum by affinity-chromatography using epitope-specific immunogen and the purity is > 95% (by SDS-PAGE).

Suggested Dilutions

Dilute the sample so that the expected range of concentrations fall within the detection range of this kit.

If the expected range of concentration is unknown, a pilot test should be conducted to decide the optimal dilution ratio for your samples.

Some PubMed article(s) citing the expression level of this target are as follows:

Boster Bio's internal QC testing used:

WB: 1:500-1:1000

IHC: 1:50-1:200

Anti-mGluR-6 (A865) GRM6 Antibody (A06163-2) Images

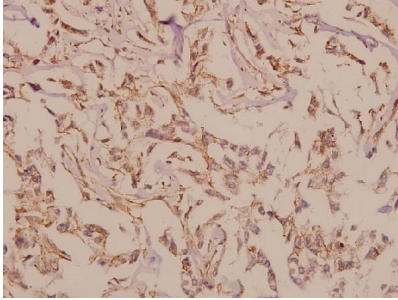


Figure 2. Immunohistochemistry validation of GRM6 using Anti-mGluR-6 (A865) GRM6 Antibody (A06163-2).

Immunohistochemistry (IHC) analyzes of mGluR-6 (A865) pAb in paraffin-embedded human breast carcinoma tissue at 1:50.

For more protocol information of IHC

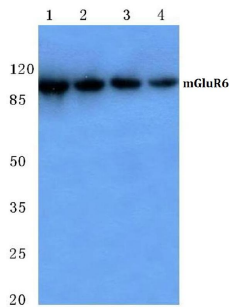


Figure 1. Western blotting validation for Anti-mGluR-6 (A865) GRM6 Antibody A06163-2

Western blot (WB) analysis of mGluR-6 (A865) polyclonal antibody at 1:500 dilution

Lane1:Hela cell lysate

Lane2:NIH-3T3 cell lysate

Lane3:Raw264.7 cell lysate

Lane4:H9C2 cell lysate

Electrophoresis was performed on a SDS-PAGE gel. To determine SDS-PAGE gel concentration

Submit a product review to Biocompare.com

Submit a review of this product to Biocompare.com to receive a \$20 Amazon.com giftcard! Your reviews help your fellow scientists make the right decisions. Thank you for your contribution.



Anti-mGluR-6 (A865) GRM6 Antibody