

Anti-YTHDC1 Antibody Picoband®

Catalog Number: A06172-1

About YTHDC1

YTH domain-containing protein 1 is a protein that in humans is encoded by the YTHDC1 gene. YTHDC1 is a nuclear protein involved in splice site selection that localises to YT bodies; dynamic subnuclear compartments, which first appear at the beginning of S-phase in the cell cycle and disperse during mitosis.

Overview

Product Name	Anti-YTHDC1 Antibody Picoband®
Reactive Species	Human, Mouse, Rat
Description	Boster Bio Anti-YTHDC1 Antibody Picoband® catalog # A06172-1. Tested in ELISA, WB applications. This antibody reacts with Human, Mouse, Rat. The brand Picoband indicates this is a premium antibody that guarantees superior quality, high affinity, and strong signals with minimal background in Western blot applications. Only our best-performing antibodies are designated as Picoband, ensuring unmatched performance.
Application	ELISA, WB
Clonality	Polyclonal
Formulation	Each vial contains 4mg Trehalose, 0.9mg NaCl, 0.2mg Na ₂ HPO ₄ , 0.005mg NaN ₃ .
Storage Instructions	Store at -20°C for one year from date of receipt. After reconstitution, at 4°C for one month. It can also be aliquotted and stored frozen at -20°C for six months. Avoid repeated freeze-thaw cycles.
Host	Rabbit
Uniprot ID	Q96MU7

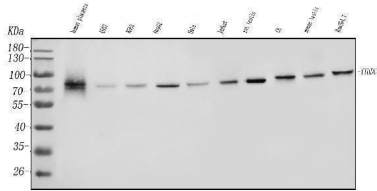
Technical Details

Immunogen	E.coli-derived human YTHDC1 recombinant protein (Position: S326-K651).
Recommended Detection Systems	Boster recommends Enhanced Chemiluminescent Kit with anti-Rabbit IgG (EK1002) for Western blot.
Cross Reactivity	No cross-reactivity with other proteins.
Isotype	Rabbit IgG
Form	Lyophilized
Concentration	Adding 0.2 ml of distilled water will yield a concentration of 500 ug/ml.
Purification	Immunogen affinity purified.

Suggested Dilutions

Western blot, 0.25-0.5ug/ml, Human, Mouse, Rat
ELISA, 0.1-0.5ug/ml, -

Anti-YTHDC1 Antibody Picoband® (A06172-1) Images



Western blot analysis of YTHDC1 using anti-YTHDC1 antibody (A06172-1). Electrophoresis was performed on a 5-20% SDS-PAGE gel at 70V (Stacking gel) / 90V (Resolving gel) for 2-3 hours. The sample well of each lane was loaded with 50ug of sample under reducing conditions. Lane 1: human placenta tissue lysates, Lane 2: human U937 whole cell lysates, Lane 3: human K562 whole cell lysates, Lane 4: human HEPG2 whole cell lysates, Lane 5: human HELA whole cell lysates, Lane 6: human Jurkat whole cell lysates, Lane 7: rat testis tissue lysates, Lane 8: rat C6 whole cell lysates, Lane 9: mouse testis tissue lysates, Lane 10: mouse RAW264.7 whole cell lysates. After Electrophoresis, proteins were transferred to a Nitrocellulose membrane at 150mA for 50-90 minutes. Blocked the membrane with 5% Non-fat Milk/TBS for 1.5 hour at RT. The membrane was incubated with rabbit anti-YTHDC1 antigen affinity purified polyclonal antibody (Catalog # A06172-1) at 0.5 ug/mL overnight at 4°C, then washed with TBS-0.1%Tween 3 times with 5 minutes each and probed with a goat anti-rabbit IgG-HRP secondary antibody at a dilution of 1:5000 for 1.5 hour at RT. The signal is developed using an Enhanced Chemiluminescent detection (ECL) kit (Catalog # EK1002) with Tanon 5200 system. A specific band was detected for YTHDC1 at approximately 85KD. The expected band size for YTHDC1 is at 85KD.

Submit a product review to Biocompare.com

Submit a review of this product to Biocompare.com to receive a \$20 Amazon.com giftcard! Your reviews help your fellow scientists make the right decisions. Thank you for your contribution.



Anti-YTHDC1 Antibody

For Research Use Only. Not for use in diagnostic procedures.