

Anti-HLX1 Antibody

Catalog Number: A06177

About HLX

G-protein coupled receptor for glutamate. Ligand binding causes a conformation change that triggers signaling via guanine nucleotide-binding proteins (G proteins) and modulates the activity of down-stream effectors, such as adenylate cyclase. Signaling inhibits adenylate cyclase activity. By similarity. Signaling stimulates TRPM1 channel activity and Ca²⁺ uptake. Required for normal vision.

Inga Everts, J. Neurosci., Feb 1999; 19: 916.

Gregory D. Salinas, J. Biol. Chem., Dec 2006; 281: 40164 - 40173.

Sheng Yan, J. Neurosci., Jan 2004; 24: 679.

Xiao-Mei Liu, J. Biol. Chem., Jun 2006; 281: 17432 - 17445.

Overview

Product Name	Anti-HLX1 Antibody
Reactive Species	Human, Mouse, Rat
Description	Boster Bio Anti-HLX1 Antibody catalog # A06177. Tested in ELISA, IF, IHC, WB applications. This antibody reacts with Human, Mouse, Rat.
Application	ELISA, IF, IHC, WB
Clonality	Polyclonal
Formulation	Liquid in PBS containing 50% glycerol, 0.5% BSA and 0.02% sodium azide.
Storage Instructions	Store at -20°C for one year. For short term storage and frequent use, store at 4°C for up to one month. Avoid repeated freeze-thaw cycles.
Host	Rabbit
Uniprot ID	Q14774

Technical Details

Immunogen	Synthesized peptide derived from the C-terminal region of human HLX1
Isotype	IgG
Form	Liquid
Concentration	1 mg/ml
Purification	The antibody was affinity-purified from rabbit antiserum by affinity-chromatography using epitope-specific immunogen.

Suggested Dilutions

Dilute the sample so that the expected range of concentrations fall within the detection range of this kit.

If the expected range of concentration is unknown, a pilot test should be conducted to decide the optimal dilution ratio for your samples.

Some PubMed article(s) citing the expression level of this target are as follows:

Boster Bio's internal QC testing used:

WB 1:500-1:2000

IHC 1:100-1:300

IF 1:200-1:1000

ELISA 1:10000

Anti-HLX1 Antibody (A06177) Images

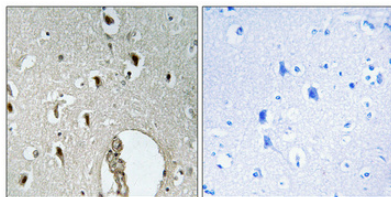


Figure 2. Immunohistochemistry validation of HLX using Anti-HLX1 Antibody (A06177).

Immunohistochemical analysis of paraffin-embedded Human brain. Antibody was diluted at 1:100 (4°C)



Figure 1. Western blotting validation for Anti-HLX1 Antibody A06177

Western Blot (WB) analysis of specific cells using HLX1 polyclonal antibody.

Electrophoresis was performed on a SDS-PAGE gel. To determine SDS-PAGE gel concentration

Submit a product review to Biocompare.com

Submit a review of this product to Biocompare.com to receive a \$20 Amazon.com giftcard! Your reviews help your fellow scientists make the right decisions. Thank you for your contribution.



Anti-HLX1 Antibody