

Anti-AP-2 complex subunit mu AP2M1 Antibody

Catalog Number: A06179-1

About AP2M1

The heterotetrameric coat assembly protein complex, also known as the adaptor-related protein complex 2 (AP-2), belongs to the adaptor complexes medium subunits family. The mu 1 subunit of the AP-2 complex (AP2M1) is required for the activity of a vacuolar ATPase, which is responsible for proton pumping occurring in the acidification of endosomes and lysosomes. AP2M1 has also been shown to associate with the HIV-1 protein Nef, suggesting that Nef may use AP-2 complex to enhance the rate of endocytosis of both CD4 and class I MHC. AP2M1 may also play an important role in regulating the intracellular trafficking and function of cytotoxic T-lymphocyte associated (CTLA)-4 protein. At least two isoforms of AP2M1 are known to exist.

Overview

Product Name	Anti-AP-2 complex subunit mu AP2M1 Antibody
Reactive Species	Human, Mouse, Rat
Description	Boster Bio Anti-AP-2 complex subunit mu AP2M1 Antibody (Catalog # A06179-1). Tested in ELISA, WB, IHC-P, IF applications. This antibody reacts with Human, Mouse, Rat.
Application	ELISA, IF, IHC-P, WB
Clonality	Polyclonal
Formulation	AP2M1 Antibody is supplied in PBS containing 0.02% sodium azide.
Storage Instructions	AP2M1 antibody can be stored at 4°C for three months and -20°C, stable for up to one year. Avoid repeated freeze-thaw cycles. Antibodies should not be exposed to prolonged high temperatures.
Host	Chicken
Uniprot ID	Q96CW1

Technical Details

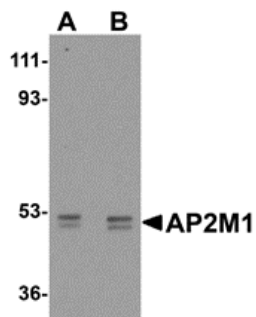
Immunogen	AP2M1 antibody was raised against a 16 amino acid synthetic peptide near the carboxy terminus of human AP2M1. The immunogen is located within amino acids 360 - 410 of AP2M1.
Predicted Reactive Species	Bovine, Chicken
Isotype	IgY
Form	Liquid
Concentration	1 mg/mL
Purification	AP2M1 Antibody is affinity chromatography purified via peptide column.

Suggested Dilutions

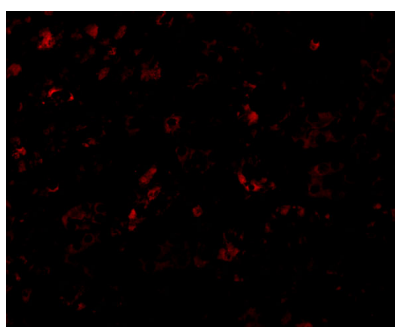
AP2M1 antibody can be used for detection of AP2M1 by Western blot at 1 - 2 ug/mL. Antibody can also be used for immunohistochemistry starting at 2.5 ug/mL. For immunofluorescence start at 20 ug/mL.

Antibody validated: Western Blot in human samples; Immunohistochemistry in mouse samples and Immunofluorescence in mouse samples. All other applications and species not yet tested. Optimal dilutions for each application should be determined by the researcher.

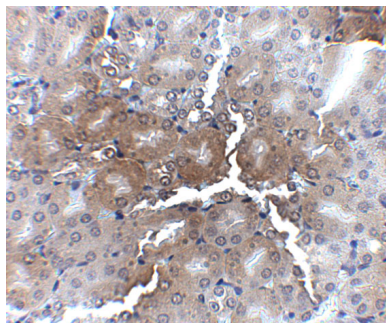
Anti-AP-2 complex subunit mu AP2M1 Antibody (A06179-1) Images



Western blot analysis of AP2M1 in human kidney tissue lysate with AP2M1 antibody at (A) 1 and (B) 2 ug/mL.



Immunofluorescence of AP2M1 in Mouse Kidney cells with AP2M1 antibody at 20 ug/mL.



Immunohistochemistry of AP2M1 in mouse kidney tissue with AP2M1 antibody at 2.5 ug/mL.

Submit a product review to [Biocompare.com](https://www.biocompare.com)

Submit a review of this product to [Biocompare.com](https://www.biocompare.com) to receive a \$20 Amazon.com giftcard! Your reviews help your fellow scientists make the right decisions. Thank you for your contribution.



Anti-AP-2 complex subunit mu AP2M1 Antibody

For Research Use Only. Not for use in diagnostic procedures.