

## Anti-USP25 Antibody

Catalog Number: A06182

### About USP25

USP25 (ubiquitin specific peptidase 25), also known as USP21, belongs to the peptidase C19 family and is a highly conserved 76-amino acid protein involved in regulation of intracellular protein breakdown, cell cycle regulation, and stress response (1). It contains one UBA-like domain and two UIM (ubiquitin-interacting motif) repeats. Due to alternative splicing events, USP25 is expressed as two short, ubiquitously expressed isoforms and one long, muscle-specific isoform (2). The long isoform of USP25 (USP25m) is upregulated in myogenesis and is implicated in regulation of muscular differentiation and function. USP25 is a deubiquitinating enzyme (DUB) that negatively regulates IL-17-triggered signaling (3,4).

### Overview

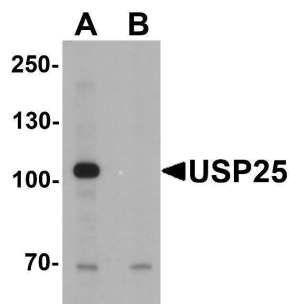
|                      |   |
|----------------------|---|
| Product Name         | Anti-USP25 Antibody   |
| Reactive Species     | Human, Mouse  |
| Description          | Boster Bio Anti-USP25 Antibody (Catalog # A06182). Tested in ELISA, WB, IHC-P, IF applications. This antibody reacts with Human, Mouse. |
| Application          | ELISA, IF, IHC-P, WB  |
| Clonality            | Polyclonal  |
| Formulation          | USP25 Antibody is supplied in PBS containing 0.02% sodium azide.  |
| Storage Instructions | USP25 antibody can be stored at 4°C for three months and -20°C, stable for up to one year.  |
| Host                 | Rabbit  |
| Uniprot ID           | Q9UHP3  |

### Technical Details

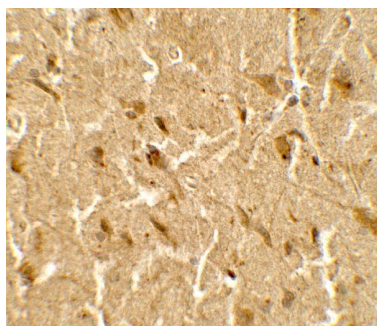
|                            |   |
|----------------------------|---|
| Immunogen                  | USP25 antibody was raised against a 17 amino acid peptide near the center of human USP25. The immunogen is located within amino acids 470 - 520 of USP25. |
| Predicted Reactive Species | Chicken   |
| Cross Reactivity           | USP25 antibody is human and mouse reactive. Multiple isoforms of USP25 are known to exist.  |
| Isotype                    | IgG   |
| Form                       | Liquid  |
| Concentration              | 1 mg/mL   |
| Purification               | USP25 antibody is affinity chromatography purified via peptide column.  |
| Suggested Dilutions        | USP25 antibody can be used for detection of USP25 by Western blot at 1 - 2 ug/ml. Antibody can  |

also be used for Immunohistochemistry at 5 ug/mL. For Immunoflorescence start at 20 ug/mL. Antibody validated: Western Blot in mouse samples; Immunohistochemistry in human samples and Immunofluorescence in human samples. All other applications and species not yet tested. Optimal dilutions for each application should be determined by the researcher.

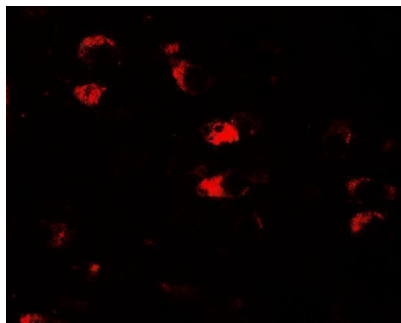
## Anti-USP25 Antibody (A06182) Images



Western blot analysis of USP25 in mouse brain tissue lysate with USP25 antibody at 1 ug/ml in (A) the absence and (B) the presence of blocking peptide.



Immunohistochemistry of USP25 in human brain tissue with USP25 antibody at 5 ug/mL.



Immunofluorescence of USP25 in human brain tissue with USP25 antibody at 20 ug/mL.

### Submit a product review to [Biocompare.com](https://www.biocompare.com)

Submit a review of this product to [Biocompare.com](https://www.biocompare.com) to receive a \$20 Amazon.com giftcard! Your reviews help your fellow scientists make the right decisions. Thank you for your contribution.



Anti-USP25 Antibody

For Research Use Only. Not for use in diagnostic procedures.