

Anti-CD1E Antibody

Catalog Number: A06184

About CD1E

APC2, also known as Anaphase promoting complex subunit 2, APC2, Cyclosome subunit 2, and ANAPC2, is a component of the anaphase promoting complex/cyclosome (APC/C), a cell cycle-regulated E3 ubiquitin ligase that controls progression through mitosis and the G₁ phase of the cell cycle. The APC/cyclosome protein complex promotes metaphase-anaphase transition by ubiquitinating its specific substrates such as mitotic cyclins and anaphase inhibitors, which are subsequently degraded by the 26S proteasome. Biochemical studies have shown that the vertebrate APC contains at least eleven subunits. The composition of APC is highly conserved in organisms from yeast to humans. APC2 is a cullin family member that interacts through the cullin domain with ANAPC11 and UBCH10.

Overview

Product Name	Anti-CD1E Antibody
Reactive Species	Human
Description	Boster Bio Anti-CD1E Antibody catalog # A06184. Tested in IHC applications. This antibody reacts with Human.
Application	IHC
Clonality	Polyclonal
Formulation	Liquid in PBS containing 50% glycerol, 0.5% BSA and 0.02% sodium azide.
Storage Instructions	Store at -20°C for one year. For short term storage and frequent use, store at 4°C for up to one month. Avoid repeated freeze-thaw cycles.
Host	Rabbit
Uniprot ID	P15812

Technical Details

Immunogen	Synthesized peptide derived from the C-terminal region of human CD1E.
Predicted Reactive Species	Bovine, Canine, Equine, Guinea Pig, Rabbit, Yeast, Zebrafish
Isotype	IgG
Form	Liquid
Concentration	This antibody's concentration is >0.5mg/ml.
Purification	Immunogen affinity purified
Suggested Dilutions	Dilute the sample so that the expected range of concentrations fall within the detection range of this

kit.

If the expected range of concentration is unknown, a pilot test should be conducted to decide the optimal dilution ratio for your samples.

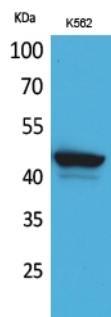
Some PubMed article(s) citing the expression level of this target are as follows:

Boster Bio's internal QC testing used:

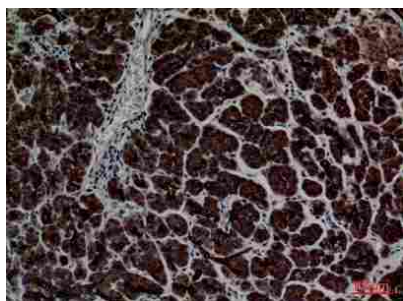
WB, 1:500-1:2000

IHC-P, 1:100-300

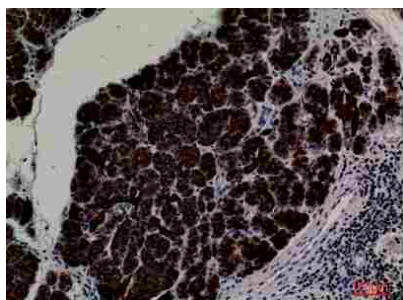
Anti-CD1E Antibody (A06184) Images



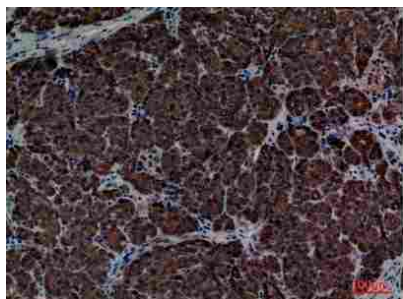
Western Blot (WB) analysis of K562 cells using CD1E Polyclonal antibody.



Immunohistochemistry (IHC) analysis of paraffin-embedded Human Pancreas, antibody was diluted at 1:100.



Immunohistochemistry (IHC) analysis of paraffin-embedded Human Pancreas, antibody was diluted at 1:100.



Immunohistochemistry (IHC) analysis of paraffin-embedded Human Pancreas, antibody was diluted at 1:100.

Submit a product review to Biocompare.com

Submit a review of this product to Biocompare.com to receive a \$20 Amazon.com giftcard! Your reviews help your fellow scientists make the right decisions. Thank you for your contribution.

