

## Anti-WIPI1 Antibody

Catalog Number: A06206

### About WIPI1

WIPI1 (WD repeat domain, phosphoinositide interacting-1), also known as WIPI1, ATG18 or WIPI49, is thought to play a role in autophagy and may regulate protein trafficking in certain recycling pathways. It contains three WD repeats and has a 7-bladed propeller structure with a conserved motif that facilitates its interaction with other proteins. WIPI1 localizes to cytoplasmic vesicles, endosomes, clathrin-coated vesicles and the trans-Golgi network. It is ubiquitously expressed with highest expression in heart, testis, placenta, pancreas and skeletal muscle. WIPI1 is upregulated in a variety of tumors, suggesting a role in carcinogenesis.

### Overview

Product Name	Anti-WIPI1 Antibody
Reactive Species	Human, Mouse, Rat
Description	Boster Bio Anti-WIPI1 Antibody (Catalog # A06206). Tested in ELISA, WB, IF applications. This antibody reacts with Human, Mouse, Rat.
Application	ELISA, IF, WB
Clonality	Polyclonal
Formulation	WIPI1 Antibody is supplied in PBS containing 0.02% sodium azide.
Storage Instructions	WIPI1 antibody can be stored at 4°C for three months and -20°C, stable for up to one year. Avoid repeated freeze-thaw cycles. Antibodies should not be exposed to prolonged high temperatures.
Host	Rabbit
Uniprot ID	Q5MNZ9

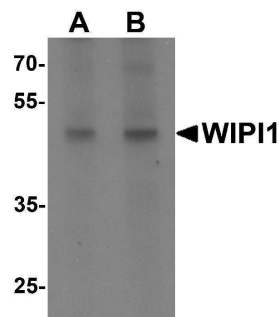
### Technical Details

Immunogen	WIPI1 antibody was raised against a 17 amino acid synthetic peptide near the carboxy terminus of human WIPI1. The immunogen is located within amino acids 350 - 400 of WIPI1.
Predicted Reactive Species	Bovine
Cross Reactivity	At least two isoforms of WIPI1 are known to exist; this antibody will detect both isoforms.
Isotype	IgG
Form	Liquid
Concentration	1 mg/mL
Purification	WIPI1 Antibody is affinity chromatography purified via peptide column.

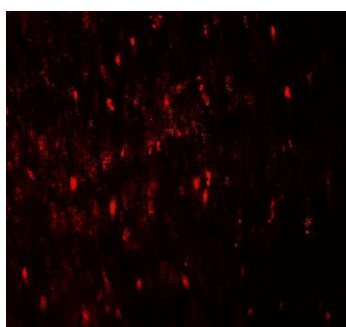
Suggested Dilutions

WIPI1 antibody can be used for detection of Wipi1 by Western blot at 1 - 2 ug/mL. For immunofluorescence start at 20 ug/mL.  
Antibody validated: Western Blot in rat samples and Immunofluorescence in human samples. All other applications and species not yet tested. Optimal dilutions for each application should be determined by the researcher.

## Anti-WIPI1 Antibody (A06206) Images



Western blot analysis of WIPI1 in rat colon tissue lysate with WIPI1 antibody at (A) 1 and (B) 2 ug/mL.



Immunofluorescence of WIPI1 in human colon tissue with WIPI1 antibody at 20 ug/mL.

### Submit a product review to [Biocompare.com](https://www.biocompare.com)

Submit a review of this product to [Biocompare.com](https://www.biocompare.com) to receive a \$20 Amazon.com giftcard! Your reviews help your fellow scientists make the right decisions. Thank you for your contribution.



### Anti-WIPI1 Antibody

For Research Use Only. Not for use in diagnostic procedures.