

Anti-F-box/LRR-repeat protein 5 FBXL5 Antibody

Catalog Number: A06215

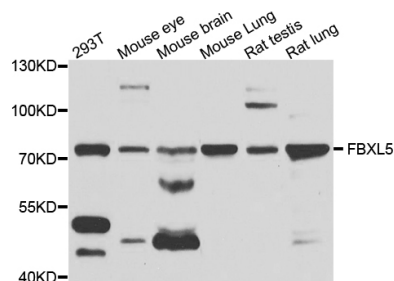
Overview

Product Name	Anti-F-box/LRR-repeat protein 5 FBXL5 Antibody
Reactive Species	Human
Description	Boster Bio Anti-F-box/LRR-repeat protein 5 FBXL5 Antibody catalog # A06215. Tested in WB,ELISA applications. This antibody reacts with Human.
Application	ELISA, WB
Clonality	Polyclonal
Formulation	Rabbit IgG, 1mg/ml in PBS with 0.02% sodium azide, 50% glycerol, pH7.2
Storage Instructions	Store at -20°C for one year. For short term storage and frequent use, store at 4°C for up to one month. Avoid repeated freeze-thaw cycles.
Host	Rabbit
Uniprot ID	Q9UKA1

Technical Details

Immunogen	KLH conjugated synthetic peptide derived from human FBXL5: 31-130/691
Isotype	IgG
Form	Liquid
Concentration	1 mg/ml
Purification	The antibody was affinity-purified from rabbit antiserum by affinity-chromatography using epitope-specific immunogen and the purity is > 95% (by SDS-PAGE).
Suggested Dilutions	WB: 1:500-1:2000 ELISA: 1:5000-1:10000

Anti-F-box/LRR-repeat protein 5 FBXL5 Antibody (A06215) Images



Western blot analysis of FBXL5 on different lysates using anti-FBXL5 antibody at 1/1,000 dilution. Positive control:
Lane 1: 293T Lane 2: Mouse eye Lane 3: Mouse brain Lane 4: Mouse lung Lane 5: Rat testis Lane 6: Rat lung

Submit a product review to Biocompare.com

Submit a review of this product to Biocompare.com to receive a \$20 Amazon.com giftcard! Your reviews help your fellow scientists make the right decisions. Thank you for your contribution.



Anti-F-box/LRR-repeat protein 5 FBXL5 Antibody

For Research Use Only. Not for use in diagnostic procedures.