

Anti-LRSAM1 Antibody

Catalog Number: A06223-1

About LRSAM1

LRSAM1 also named as hTAL, RIFLE or Tsg101 associated ligase is a 723 amino acid protein, which contains 6 LRR repeats, 1 Ring-type zinc finger and 1 SAM domain. LRSAM1 is localized in cytoplasm and highly expressed in adult spinal cord motoneurons as well as in fetal spinal cord and muscle tissue. As a E3 ubiquitin protein ligase, LRSAM1 mediates monoubiquitination of TSG101 at multiple sites, leading to inactivate the ability of TSG101 to sort endocytic and exocytic cargos, LRSAM1 gene mutation has an association with Charcot Maire Tooth disease 2P.

Overview

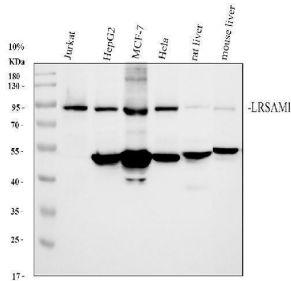
Product Name	Anti-LRSAM1 Antibody
Reactive Species	Human, Mouse
Description	Boster Bio Anti-LRSAM1 Antibody catalog # A06223-1. Tested in WB, IHC, ICC, IF, ELISA applications. This antibody reacts with Human, Mouse.
Application	ELISA, IF, IHC, ICC, WB
Clonality	Polyclonal
Formulation	500 ug/ml antibody with PBS, 0.02% NaN ₃ , 1 mg stabilizing protein and 50% glycerol *This antibody is supplied in a stabilized formulation. Compatibility with conjugation reactions depends on the chemistry of the conjugation method used. For conjugation methods that are not compatible with the stabilizing components present in this formulation, a carrier-free antibody format is required.
Storage Instructions	12 months from date of receipt at -20°C as supplied. 6 months at 2 to 8°C after reconstitution. Avoid repeated freezing and thawing.
Host	Rabbit
Uniprot ID	Q6UWE0

Technical Details

Immunogen	E.coli-derived human LRSAM1 recombinant protein (Position: M503-H721).
Form	Liquid
Concentration	500 ug/ml
Purification	Immunogen affinity purified.
Suggested Dilutions	Western blot, 1:500-2000 Immunohistochemistry, 1:50-400 Immunocytochemistry/Immunofluorescence, 1:50-400 ELISA, 1:100-1000



Anti-LRSAM1 Antibody (A06223-1) Images



Western blot analysis of LRSAM1 using anti-LRSAM1 antibody (A06223-1). Electrophoresis was performed on a 10% SDS-PAGE gel at 80V (Stacking gel) / 120V (Resolving gel) for 2 hours. The sample well of each lane was loaded with 30 ug of sample under reducing conditions. Lane 1: human Jurkat whole cell lysates, Lane 2: human HepG2 whole cell lysates, Lane 3: human MCF-7 whole cell lysates, Lane 4: human Hela whole cell lysates, Lane 5: rat liver tissue lysates, Lane 6: mouse liver tissue lysates. After electrophoresis, proteins were transferred to a nitrocellulose membrane at 150 mA for 50-90 minutes. Blocked the membrane with 5% non-fat milk/TBS for 1.5 hour at RT. The membrane was incubated with rabbit anti-LRSAM1 antigen affinity purified polyclonal antibody (A06223-1) at 1:1000 overnight at 4°C, then washed with TBS-0.1%Tween 3 times with 5 minutes each and probed with a goat anti-rabbit IgG-HRP secondary antibody at a dilution of 1:5000 for 1.5 hour at RT. The signal is developed using an ECL Plus Western Blotting Substrate (Catalog # AR1196-200) with Tanon 5200 system. A specific band was detected for LRSAM1 at approximately 84 kDa. The expected band size for LRSAM1 is at 84 kDa.

Submit a product review to [Biocompare.com](https://www.biocompare.com)

Submit a review of this product to [Biocompare.com](https://www.biocompare.com) to receive a \$20 Amazon.com giftcard! Your reviews help your fellow scientists make the right decisions. Thank you for your contribution.



Anti-LRSAM1 Antibody

For Research Use Only. Not for use in diagnostic procedures.