

## Anti-ORL 1 OPRL1 Antibody

Catalog Number: A06228

### Overview

Product Name	Anti-ORL 1 OPRL1 Antibody
Reactive Species	Human, Mouse, Rat
Description	Boster Bio Anti-ORL 1 OPRL1 Antibody catalog # A06228. Tested in IF, IHC applications. This antibody reacts with Human, Mouse, Rat.
Application	IF, IHC
Clonality	Polyclonal
Storage Instructions	Store at -20°C for one year. For short term storage and frequent use, store at 4°C for up to one month. Avoid repeated freeze-thaw cycles.
Host	Rabbit
Uniprot ID	P41146

### Technical Details

Immunogen	Synthetic Peptide CKTSETVPRPA conjugated to KLH.
Isotype	Rabbit IgG
Form	Liquid
Purification	Whole serum
Suggested Dilutions	<p>Dilute the sample so that the expected range of concentrations fall within the detection range of this kit.</p> <p>If the expected range of concentration is unknown, a pilot test should be conducted to decide the optimal dilution ratio for your samples.</p> <p>Some PubMed article(s) citing the expression level of this target are as follows:</p> <p>For protocols, please visit <a href="https://www.bosterbio.com/protocol-and-troubleshooting/">https://www.bosterbio.com/protocol-and-troubleshooting/</a></p>

## Anti-ORL 1 OPRL1 Antibody (A06228) Images

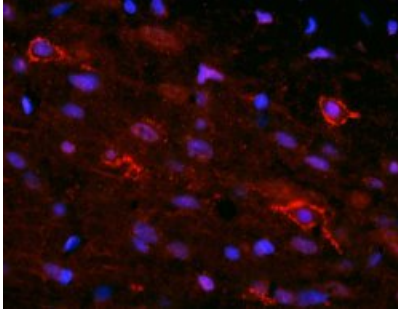


Figure 1. Immunofluorescent staining data of OPRL1 using Anti-ORL 1 OPRL1 Antibody (A06228).

ORL1 staining in rat brain(singulate cortex). ORL1 Detection was done using anti-rabbit Cy3 conjugated antibodies (red color). DAPI was used to counterstain cell nuclei (blue color). Working dilution is 1:100-1:400.

### Submit a product review to Biocompare.com

Submit a review of this product to Biocompare.com to receive a \$20 Amazon.com giftcard! Your reviews help your fellow scientists make the right decisions. Thank you for your contribution.



Anti-ORL 1 OPRL1 Antibody