

Anti-SPG15 ZFYVE26 Antibody

Catalog Number: A06231

About ZFYVE26

Hereditary spastic paraplegias (HSPs) are genetically and phenotypically heterogeneous disorders. Spastic paraplegia with thinning of the corpus callosum (ARHSP-TCC) is a relatively frequent form of complicated hereditary spastic paraplegia in which mental retardation and muscle stiffness at onset are followed by slowly progressive paraparesis and cognitive deterioration. SPG15 is the second gene known to be responsible for ARHSP-TCC in the Italian population. Mutations in this gene are associated with autosomal recessive spastic paraplegia-15. SPG15 encodes a protein containing a FYVE zinc finger binding domain which is thought to target these proteins to membrane lipids through interaction with phospholipids in the membrane. SPG15 mRNA is widely distributed in human tissues, as well as in rat embryos, suggesting a possible role for this protein during embryonic development. SPG15 co-localizes partially with endoplasmic reticulum and endosome markers, suggesting a role in intracellular trafficking.

Overview

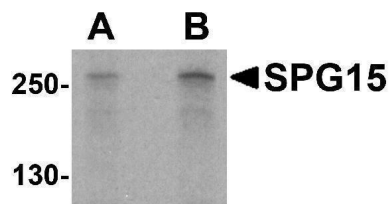
Product Name	Anti-SPG15 ZFYVE26 Antibody
Reactive Species	Human, Mouse, Rat
Description	Boster Bio Anti-SPG15 ZFYVE26 Antibody (Catalog # A06231). Tested in ELISA, WB, IF applications. This antibody reacts with Human, Mouse, Rat.
Application	ELISA, IF, WB
Clonality	Polyclonal
Formulation	SPG15 Antibody is supplied in PBS containing 0.02% sodium azide.
Storage Instructions	SPG15 antibody can be stored at 4°C for three months and -20°C, stable for up to one year. Avoid repeated freeze-thaw cycles. Antibodies should not be exposed to prolonged high temperatures.
Host	Rabbit
Uniprot ID	Q68DK2

Technical Details

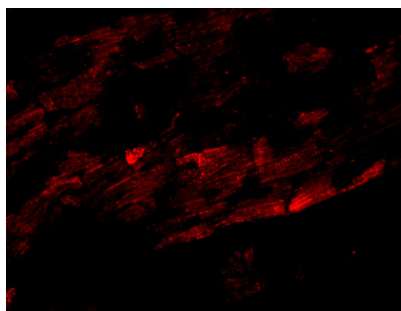
Immunogen	SPG15 antibody was raised against a 16 amino acid synthetic peptide near the carboxy terminus of human SPG15. The immunogen is located within amino acids 1710 - 1760 of SPG15.
Predicted Reactive Species	Bovine
Cross Reactivity	Multiple isoforms of SPG15 are known to exist.
Isotype	IgG
Form	Liquid

Concentration	1 mg/mL
Purification	SPG15 Antibody is affinity chromatography purified via peptide column.
Suggested Dilutions	SPG15 antibody can be used for detection of SPG15 by Western blot at 1 - 2 μ g/mL. For immunofluorescence start at 20 μ g/mL. Antibody validated: Western Blot in human samples and Immunofluorescence in mouse samples. All other applications and species not yet tested. Optimal dilutions for each application should be determined by the researcher.

Anti-SPG15 ZFYVE26 Antibody (A06231) Images



Western blot analysis of SPG15 in K562 cell lysate with SPG15 antibody at (A) 1 and (B) 2 ug/mL.



Immunofluorescence of SPG15 in Mouse Heart tissue with SPG15 antibody at 20 ug/mL.

Submit a product review to [Biocompare.com](https://www.biocompare.com)

Submit a review of this product to [Biocompare.com](https://www.biocompare.com) to receive a \$20 Amazon.com giftcard! Your reviews help your fellow scientists make the right decisions. Thank you for your contribution.



Anti-SPG15 ZFYVE26 Antibody

For Research Use Only. Not for use in diagnostic procedures.