

Anti-UIMC1 Antibody (C-term)

Catalog Number: A06262-2

About UIMC1

Ubiquitin-binding protein that specifically recognizes and binds 'Lys-63'-linked ubiquitin. Plays a central role in the BRCA1-A complex by specifically binding 'Lys-63'-linked ubiquitinated histones H2A and H2AX at DNA lesions sites, leading to target the BRCA1-BARD1 heterodimer to sites of DNA damage at double-strand breaks (DSBs). The BRCA1-A complex also possesses deubiquitinase activity that specifically removes 'Lys-63'-linked ubiquitin on histones H2A and H2AX. Also weakly binds monoubiquitin but with much less affinity than 'Lys-63'-linked ubiquitin. May interact with monoubiquitinated histones H2A and H2B; the relevance of such results is however unclear in vivo. Does not bind Lys-48'-linked ubiquitin. May indirectly act as a transcriptional repressor by inhibiting the interaction of NR6A1 with the corepressor NCOR1.

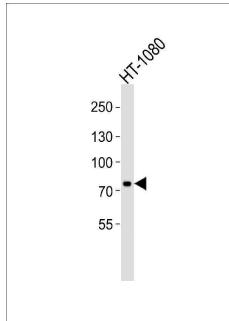
Overview

Product Name	Anti-UIMC1 Antibody (C-term)
Reactive Species	Human
Description	Boster Bio Anti-UIMC1 Antibody (C-term) (Catalog # A06262-2). Tested in Flow Cytometry, WB application(s). This antibody reacts with Human.
Application	Flow Cytometry, WB
Clonality	Polyclonal
Formulation	Purified polyclonal antibody supplied in PBS with 0.09% (W/V) sodium azide.
Storage Instructions	Maintain refrigerated at 2-8°C for up to 2 weeks. For long-term storage, store at -20°C in small aliquots to prevent freeze-thaw cycles.
Host	Rabbit
Uniprot ID	Q96RL1

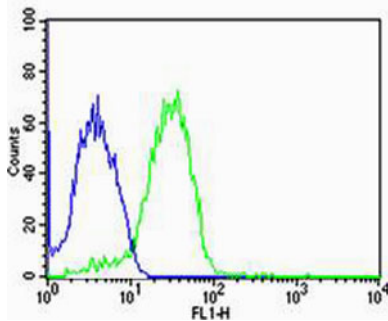
Technical Details

Immunogen	This UIMC1 antibody is generated from a rabbit immunized with a KLH conjugated synthetic peptide between 567-601 amino acids from the C-terminal region of human UIMC1.
Predicted Reactive Species	Mouse, Sheep
Isotype	Rabbit IgG
Purification	This antibody is purified through a protein A column, followed by peptide affinity purification.
Suggested Dilutions	WB: 1:1000 FC: 1:25

Anti-UIMC1 Antibody (C-term) (A06262-2) Images



Western blot analysis of lysate from HT-1080 cell line, using UIMC1 Antibody (C-term). A06262-2 was diluted at 1:1000. A goat anti-rabbit IgG H&L (HRP) at 1:5000 dilution was used as the secondary antibody. Lysate at 35ug.



Flow cytometric analysis of MCF-7 cells using UIMC1 Antibody (C-term)(green,) compared to an isotype control of rabbit IgG(blue). A06262-2 was diluted at 1:25 dilution. An Alexa Fluor® 488 goat anti-rabbit IgG at 1:400 dilution was used as the secondary antibody.

Submit a product review to [Biocompare.com](https://www.biocompare.com)

Submit a review of this product to [Biocompare.com](https://www.biocompare.com) to receive a \$20 Amazon.com giftcard! Your reviews help your fellow scientists make the right decisions. Thank you for your contribution.



Anti-UIMC1 Antibody (C-term)

For Research Use Only. Not for use in diagnostic procedures.