

Anti-SRPX2 Antibody

Catalog Number: A06268

About SRPX2

Sushi-repeat-containing protein X-linked 2 (SRPX2) is a neural gene functioning in the speech and language center of the human brain; mutations in this gene lead to epilepsy, speech dyspraxia, mental retardation and cognitive disorders. Recently, SRPX2 was found to be a novel mediator of angiogenesis and can act as a ligand for the urokinase-type plasminogen activator, a protein that can facilitate invasive migration of sprouting endothelial cells. SRPX2 is also overexpressed in gastric cancer, leading to increased phosphorylation levels of focal adhesion kinase and enhanced cellular migration and adhesion, suggesting that SRPX2 may be a potential target in the treatment of metastatic cancers.

Overview

Product Name	Anti-SRPX2 Antibody
Reactive Species	Human, Mouse, Rat
Description	Boster Bio Anti-SRPX2 Antibody (Catalog # A06268). Tested in ELISA, WB, IHC-P, IF applications. This antibody reacts with Human, Mouse, Rat.
Application	ELISA, IF, IHC-P, WB
Clonality	Polyclonal
Formulation	SRPX2 Antibody is supplied in PBS containing 0.02% sodium azide.
Storage Instructions	Antibody can be stored at 4°C up to one year. Antibodies should not be exposed to prolonged high temperatures.
Host	Rabbit
Uniprot ID	O60687

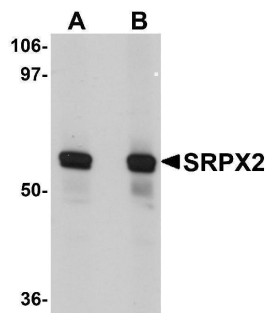
Technical Details

Immunogen	SRPX2 antibody was raised against a 16 amino acid synthetic peptide from near the amino terminus of human SRPX2. The immunogen is located within the first 50 amino acids of SRPX2.
Predicted Reactive Species	Bovine
Isotype	IgG
Form	Liquid
Concentration	1 mg/mL
Purification	SRPX2 Antibody is affinity chromatography purified via peptide column.
Suggested Dilutions	SRPX2 antibody can be used for detection of SRPX2 by Western blot at 1 - 2 ug/mL. Antibody can also be used for immunohistochemistry starting at 5 ug/mL. For immunofluorescence start at 20

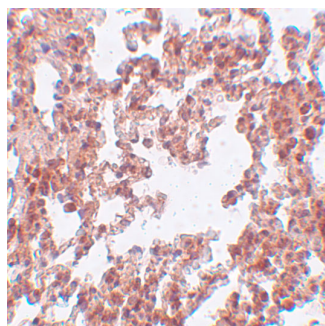
ug/mL.

Antibody validated: Western Blot in human samples; Immunohistochemistry in rat samples and Immunofluorescence in human samples. All other applications and species not yet tested. Optimal dilutions for each application should be determined by the researcher.

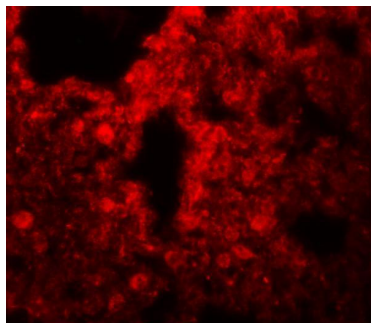
Anti-SRPX2 Antibody (A06268) Images



Western blot analysis of SRPX2 in human lung tissue lysate with SRPX2 antibody at (A) 1 and (B) 2 ug/mL.



Immunohistochemistry of SRPX2 in rat lung tissue with SRPX2 antibody at 5 ug/mL.



Immunofluorescence of SRPX2 in human lung tissue with SRPX2 antibody at 20 ug/mL.

Submit a product review to [Biocompare.com](https://www.biocompare.com)

Submit a review of this product to [Biocompare.com](https://www.biocompare.com) to receive a \$20 Amazon.com giftcard! Your reviews help your fellow scientists make the right decisions. Thank you for your contribution.



Anti-SRPX2 Antibody

For Research Use Only. Not for use in diagnostic procedures.