

## Anti-LAMTOR1 Antibody

Catalog Number: A06290

### About LAMTOR1

LAMTOR1 is a 161 amino acid membrane protein belonging to the LAMTOR family. It has been identified to interact with and recruit the four Rag GTPases (Rag A-D) to the surface of lysosomes (1). The mTORC1 kinase complex is a critical component in the regulation of cell growth (2). As part of the regulator complex, LAMTOR1 recruits the Rag GTPases and the mTORC1 complex to lysosomes, a key step in activation of the TOR signaling cascade by amino acids (3). LAMTOR1 may be involved in cholesterol homeostasis regulating LDL uptake and cholesterol release from late endosomes / lysosomes (4).

### Overview

Product Name	Anti-LAMTOR1 Antibody
Reactive Species	Human, Mouse, Rat
Description	Boster Bio Anti-LAMTOR1 Antibody (Catalog # A06290). Tested in ELISA, WB, IHC-P, IF applications. This antibody reacts with Human, Mouse, Rat.
Application	ELISA, IF, IHC-P, WB
Clonality	Polyclonal
Formulation	LAMTOR1 antibody is supplied in PBS containing 0.02% sodium azide.
Storage Instructions	LAMTOR1 antibody can be stored at 4°C for three months and -20°C, stable for up to one year.
Host	Rabbit
Uniprot ID	Q6IAA8

### Technical Details

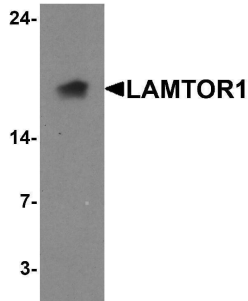
Immunogen	Rabbit polyclonal LAMTOR1 antibody was raised against a 17 amino acid peptide near the amino terminus of human LAMTOR1 . The immunogen is located within the first 50 amino acids of LAMTOR1.
Predicted Reactive Species	Bovine
Cross Reactivity	LAMTOR1 antibody is human, mouse and rat specific. LAMTOR1 antibody is predicted to not cross-react with other LAMTOR family proteins.
Isotype	IgG
Form	Liquid
Concentration	1 mg/mL
Purification	LAMTOR1 antibody is affinity chromatography purified via peptide column.

Suggested Dilutions

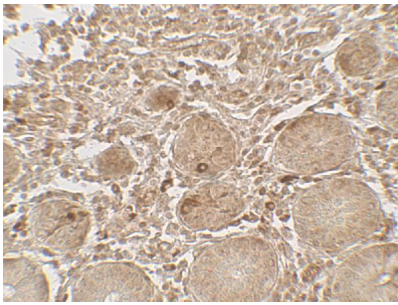
LAMTOR1 antibody can be used for detection of LAMTOR1 by Western blot at 1 - 2 ug/ml. Antibody can also be used for Immunohistochemistry starting at 5 ug/mL. For immunofluorescence start at 20 ug/mL.

Antibody validated: Western Blot in human samples; Immunohistochemistry in human samples and Immunofluorescence in human samples. All other applications and species not yet tested. Optimal dilutions for each application should be determined by the researcher.

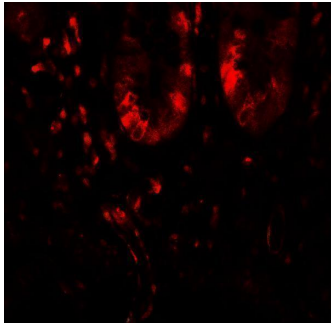
## Anti-LAMTOR1 Antibody (A06290) Images



Western blot analysis of LAMTOR1 in A431 cell lysate with LAMTOR1 antibody at 1 ug/ml.



Immunohistochemistry of LAMTOR1 in human small intestine tissue with LAMTOR1 antibody at 5 ug/mL.



Immunofluorescence of LAMTOR1 in human small intestine tissue with LAMTOR1 antibody at 20 ug/mL.

### Submit a product review to [Biocompare.com](https://www.biocompare.com)

Submit a review of this product to [Biocompare.com](https://www.biocompare.com) to receive a \$20 Amazon.com giftcard! Your reviews help your fellow scientists make the right decisions. Thank you for your contribution.



Anti-LAMTOR1 Antibody

For Research Use Only. Not for use in diagnostic procedures.