

## Anti-LILRA3 Antibody (C-term)

Catalog Number: A06300

### About LILRA3

May act as soluble receptor for class I MHC antigens.

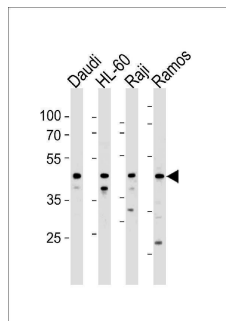
### Overview

Product Name	Anti-LILRA3 Antibody (C-term)
Reactive Species	Human
Description	Boster Bio Anti-LILRA3 Antibody (C-term) (Catalog # A06300). Tested in WB application(s). This antibody reacts with Human.
Application	WB
Clonality	Polyclonal
Formulation	Purified polyclonal antibody supplied in PBS with 0.09% (W/V) sodium azide.
Storage Instructions	Maintain refrigerated at 2-8°C for up to 2 weeks. For long-term storage, store at -20°C in small aliquots to prevent freeze-thaw cycles.
Host	Rabbit
Uniprot ID	Q8N6C8

### Technical Details

Immunogen	This LILRA3 antibody is generated from rabbits immunized with a KLH conjugated synthetic peptide between 350-378 amino acids from the C-terminal region of human LILRA3.
Predicted Reactive Species	Bovine, Mouse, Rat
Isotype	Rabbit IgG
Purification	This antibody is purified through a protein A column, followed by peptide affinity purification.
Suggested Dilutions	WB: 1:1000

## Anti-LILRA3 Antibody (C-term) (A06300) Images



LILRA3 Antibody (C-term) western blot analysis in Daudi,HL-60,Raji and Ramos cell line lysates (35ug/lane). This demonstrates the LILRA3 antibody detected the LILRA3 protein (arrow).

### Submit a product review to Biocompare.com

Submit a review of this product to Biocompare.com to receive a \$20 Amazon.com giftcard! Your reviews help your fellow scientists make the right decisions. Thank you for your contribution.



Anti-LILRA3 Antibody (C-term)

For Research Use Only. Not for use in diagnostic procedures.