

## Anti-SKA2 Antibody

Catalog Number: A06326-1

### About SKA2

Upon entry into mitosis, the cell's microtubule (MT) network forms the mitotic spindle, allowing the segregation of paired chromosomes. Proteinaceous structures on centromeric chromatin termed kinetochores (KT) are essential for the proper attachment of the chromosomes to the spindle MTs. A recently discovered spindle and kinetochore complex, comprised of proteins SKA1, SKA2, and SKA3, has been found to be required for stable KT-MT interactions and timely anaphase onset. Depletion of either SKA1 or SKA2 by siRNA results in the loss of both proteins from the KT, but does not impact overall KT structure. Cells depleted of the SKA complex undergo a prolonged checkpoint-dependent delay in a metaphase-like state, indicating the importance of the SKA complex in the maintenance of the metaphase plate and spindle checkpoint silencing. SKA2 has also been shown to interact with glucocorticoid receptors and to be involved in glucocorticoid signaling and cell proliferation.

### Overview

Product Name	Anti-SKA2 Antibody
Reactive Species	Human, Mouse
Description	Boster Bio Anti-SKA2 Antibody (Catalog # A06326-1). Tested in ELISA, WB applications. This antibody reacts with Human, Mouse.
Application	ELISA, WB
Clonality	Polyclonal
Formulation	SKA2 Antibody is supplied in PBS containing 0.02% sodium azide.
Storage Instructions	SKA2 antibody can be stored at 4°C for three months and -20°C, stable for up to one year. Avoid repeated freeze-thaw cycles. Antibodies should not be exposed to prolonged high temperatures.
Host	Rabbit
Uniprot ID	Q8WVK7

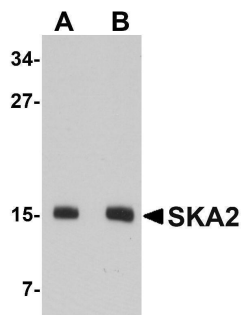
### Technical Details

Immunogen	SKA2 antibody was raised against a 15 amino acid synthetic peptide from near the amino terminus of human SKA2. The immunogen is located within the first 50 amino acids of SKA2.
Predicted Reactive Species	Bovine, Rat
Isotype	IgG
Form	Liquid
Concentration	1 mg/mL
Purification	SKA2 Antibody is affinity chromatography purified via peptide column.

Suggested Dilutions

SKA2 antibody can be used for detection of SKA2 by Western blot at 0.5 - 1 ug/mL.  
Antibody validated: Western Blot in mouse samples. All other applications and species not yet tested. Optimal dilutions for each application should be determined by the researcher.

## Anti-SKA2 Antibody (A06326-1) Images



Western blot analysis of SKA2 in 3T3 cell lysate with SKA2 antibody at (A) 0.5 and (B) 1 ug/mL.

### Submit a product review to Biocompare.com

Submit a review of this product to Biocompare.com to receive a \$20 Amazon.com giftcard! Your reviews help your fellow scientists make the right decisions. Thank you for your contribution.



### Anti-SKA2 Antibody

For Research Use Only. Not for use in diagnostic procedures.