

Anti-INPP4B Antibody

Catalog Number: A06336

About INPP4B

Inositol polyphosphate 4-phosphatase type II (INPP4B) is one of the enzymes involved in phosphatidylinositol signaling pathways. It removes the phosphate group at position 4 of the inositol ring from inositol 3,4-bisphosphate (1). INPP4B can function as a tumor suppressor by inhibiting PI3K signaling. In human epithelial cells, knockdown of INPP4B expression resulted in enhanced Akt activation, anchorage-independent growth, and enhanced overall motility (2). It is thought INPP4B may also have oncogenic functions as INPP4B-dependent PI3K signaling is mediated by SGK3 in breast cancer cells and expression of INPP4B leads to enhanced SGK3 activation and suppression of AKT phosphorylation (3).

Overview

Product Name	Anti-INPP4B Antibody
Reactive Species	Human, Mouse, Rat
Description	Boster Bio Anti-INPP4B Antibody (Catalog # A06336). Tested in ELISA, WB, ICC applications. This antibody reacts with Human, Mouse, Rat.
Application	ELISA, ICC, WB
Clonality	Polyclonal
Formulation	INPP4B antibody is supplied in PBS containing 0.02% sodium azide.
Storage Instructions	INPP4B antibody can be stored at 4°C for three months and -20°C, stable for up to one year.
Host	Rabbit
Uniprot ID	Q9BS68

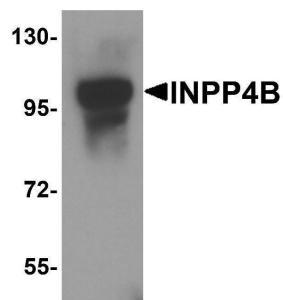
Technical Details

Immunogen	INPP4B antibody was raised against a 17 amino acid peptide near the amino terminus of human INPP4B. The immunogen is located within the last 50 amino acids of INPP4B.
Predicted Reactive Species	Bovine, Rat
Cross Reactivity	INPP4B antibody is human, mouse and rat reactive. At least two isoforms of INPP4B are known to exist; this antibody only detects the longer isoform. INPP4B antibody is predicted to not cross-react with INPP4A.
Isotype	IgG
Form	Liquid
Concentration	1 mg/mL
Purification	INPP4B antibody is affinity chromatography purified via peptide column.

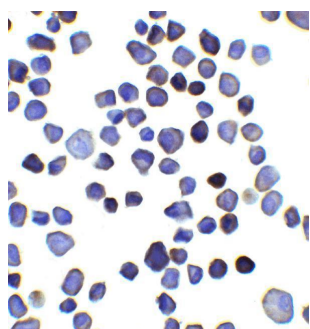
Suggested Dilutions

INPP4B antibody can be used for detection of INPP4B by Western blot at 1 - 2 ug/ml. Antibody can also be used for immunocytochemistry starting at 2.5 ug/mL.
Antibody validated: Western Blot in mouse samples and Immunocytochemistry in mouse samples. All other applications and species not yet tested. Optimal dilutions for each application should be determined by the researcher.

Anti-INPP4B Antibody (A06336) Images



Western blot analysis of INPP4B in 3T3 cell lysate with INPP4B antibody at 1 ug/ml.



Immunocytochemistry of INPP4B in 3T3 cells with INPP4B antibody at 2.5 ug/ml.

Submit a product review to [Biocompare.com](https://www.biocompare.com)

Submit a review of this product to [Biocompare.com](https://www.biocompare.com) to receive a \$20 Amazon.com giftcard! Your reviews help your fellow scientists make the right decisions. Thank you for your contribution.



Anti-INPP4B Antibody

For Research Use Only. Not for use in diagnostic procedures.